



Annual Statistical Report 2012

Based on data from CARE / EC from 2001 to 2010

DaCoTA

Building the European Road Safety Observatory

Workpackage 3

Deliverable No: D 3.9

Authors:

KfV (Austria)
NTUA (Greece)
SWOV (The Netherlands)
TRL (United Kingdom)
INTRAS-UEG (Spain)
IFSTTAR (France)

Workpackage Leader:
NTUA (Greece)

Task Leader:
KfV (Austria)

Contract Number: TREN/FP7TR/
233659/"DaCoTA"

Acronym: DaCoTA

Version: No1

Date of issue: 31/03/2011



CONTENTS

1	Introduction	3
1.1	The CARE Database	3
1.2	Note to the Reader	4
2	Overview – major issues	7
2.1	EU – Developments (includes databases other than CARE)	7
2.2	Interesting Details	8
3	Time Series – last 10 years	10
3.1	General time series	10
3.2	Time series related to mode of transport	18
3.3	Time series related to person age and gender	29
4	Fatalities 2009	44
4.1	People involved	44
4.1.1	Age and gender of persons	44
4.2	Modes of transport	47
4.2.1	Mode of transport by age of persons	47
4.2.2	Mode of transport by type of area	52
4.3	Accident characteristics	55
4.3.1	Various periods of time (month, day of week, hour of day)	55
4.3.2	Type of area/road	74
4.3.3	Type of junction	76
4.3.4	Weather conditions	77
5	Glossary	79
6	List of tables	85
7	List of figures	86

1 Introduction

1.1 The CARE Database

Community database on **A**ccidents on the **R**oads in **E**urope

Road traffic accidents in the Member States of the European Union annually claim about 37.000 lives and leave more than 1.2 million people injured, representing estimated costs of 145 billion euros. Since 1984, a large number of measures to reduce road accidents have been taken at a regional level. Along with these measures, the Council adopted a Decision on 30 November 1993 on the creation of a Community database on road accidents (93/704/EC)¹, the CARE project.

It was commonly agreed that such a database at the Community level would make it possible to identify and quantify road safety problems, evaluate the efficiency of road safety measures, determine the relevance of Community actions and facilitate the exchange of experience in this field. After a pilot phase of about 3 years, the Council endorsed the “Report from the Commission on the progress with the project and its future prospects” (COM(97) 238 final).

CARE is a Community database on road accidents resulting in death or injury (no statistics on damage-only accidents are kept). The major difference between CARE and most other existing international databases is the high level of disaggregation, i.e. CARE is based on detailed data of individual accidents as collected by the Member States. This structure allows for maximum flexibility and potential with regard to analysing the information contained in the system and opens up a whole set of new possibilities in the field of accident analysis.

National data sets are integrated into the CARE database in their original national structure and definitions, with confidential data blanked out. However, transformation rules are implemented in the CARE database in order to increase data compatibility and thus enhance the functioning of the system.

The process of improving “homogenisation” of accident data within CARE is underway. In the meantime, the inherent incompatibility of national accident data remains a source of possible misinterpretation when performing comparative analyses at international level. Therefore, on-line access to the CARE database is currently restricted to expert users. The summary statistical tables and figures contained here provide an overview of road accident data from 2001 to 2010. For some figures other sources than CARE have been used in order to give an overview of EU-25 road accident data.

¹ OJ No 329, 30.12.1993, p. 63.

1.2 Note to the Reader

This Annual Statistical Report provides the basic characteristics of road accidents in 25 member states of the European Union for the period 2001-2010, on the basis of data collected and processed in the CARE database, the Community Road Accident Database with disaggregate data (Council Decision EEC 93/704 final).

The period 2001-2010 has been used in order to maximize the sample of data. However, data for some countries and corresponding years were not yet available in the CARE database at the date of drafting this report.

The next table shows which data from the EU-27 and Switzerland are available in the CARE database (x) and are used in this report. x

Code	Country	1991-2000	2001	2002	2003	2004	2005	2006	2007	2008	2009	2010
BE	Belgium	X	X	X	X	X	X	X	X	X	X	X
BG	Bulgaria											
CZ	Czech Republic	X	X	X	X	X	X	X	X	X	X	X
DK	Denmark	X	X	X	X	X	X	X	X	X	X	X
DE	Germany		X	X	X	X	X	X	X	X	X	X
EE	Estonia						X	X	X	X	X	-
IE	Ireland	X	X	X	X	X	X	X	X	X	X	X
EL	Greece	X	X	X	X	X	X	X	X	X	X	X
ES	Spain	X	X	X	X	X	X	X	X	X	X	X
FR	France	X	X	X	X	X	X	X	X	X	X	X
IT	Italy	X	X	X	X	X	X	X	X	X	X	X
CY	Cyprus					X						
LV	Latvia					X	X	X	X	X	X	X
LT	Lithuania											
LU	Luxembourg		X	X	X	X	X	X	X	X	X	X
HU	Hungary				X	X	X	X	X	X	X	X
MT	Malta	X					X	X	X	X	X	X
NL	Netherlands		X	X	X	X	X	X	X	X	X	X
AT	Austria	X	X	X	X	X	X	X	X	X	X	X
PL	Poland		X	X	X	X	X	X	X	X	X	X
PT	Portugal	X	X	X	X	X	X	X	X	X	X	X
RO	Romania		X	X	X	X	X	X	X	X	X	X
SI	Slovenia		X	X	X	X	X	X	X	X	X	X
SK	Slovakia						X	X	X	X	X	X
FI	Finland	X	X	X	X	X	X	X	X	X	X	X
SE	Sweden	X	X	X	X	X	X	X	X	X	X	-
UK	United Kingdom	X	X	X	X	X	X	X	X	X	X	X
CH	Switzerland					X				X	X	X
IS	Island			X	X	X	X	X	X	X	X	X

As seen in the table before, there are missing values in the CARE database. Data are entirely missing for some countries for some years, while certain variables may be missing even when the data are present. Most tables and figures are based on an EU-24 standard. Data for UK includes data from 2010 for Great Britain and Data for 2009 for North Ireland. These contain all 22 countries with actual Data available for 2010 plus Estonia and Sweden with data from 2009. The notes in the tables state only deviations from this standard.

The reader should be aware of the following remarks concerning the contents of this Annual Statistical Report:

- It should be taken into account that analysis and comparisons of the numbers of accidents and injuries are not always possible, as different definitions exist in each EU Member State.
- Fatality data are compatible between countries and use common definitions as a result of the CAREPLUS 1 and CAREPLUS 2² project. Corrective factors have been applied to comply with the international definition of people killed within 30 days after an accident. (http://ec.europa.eu/transport/roadsafety/road_safety_observatory/doc/care_glossary.pdf).
- On fatal accidents data, no corrective factors have been applied to comply with the international definition of persons killed within 30 days.
- Minor differences in totals are due to rounding-off differences of data.
- “Unknown” values are not displayed in tables, but totals include the unknowns.
- The EU totals for all people killed are not necessarily the sum of each sub-division of these persons, given that there are no data available for all sub-divisions and all countries. Corresponding percentages refer to the available data.
- Partial or complete reproduction of these statistics is permitted if the source is mentioned and accompanied with the present remarks.
- The basic characteristics of fatal road accidents in the EU member states have been selected as those which might be useful for road accident analysis and where data are available for all or most of the EU countries (these are results of CAREPLUS project on making accident data comparable). More characteristics are available since the CAREPLUS 2 project. More precisely, the basic characteristics of fatal road accidents refer to:

Person class (driver, passenger, pedestrian)

Person killed (age groups and/or gender)

Area type (inside or outside urban area)

Motorway (yes or no)

Junction type (crossroad, level crossing, not at a junction, roundabout, T or Y junction)

Weather conditions (dry, fog or mist, rain, snow/sleet/hail, strong wind)

Modes of transport – vehicle group (agricultural tractor, bus or coach [>8 seats], car or taxi, heavy goods vehicles, lorry under 3,5 tons, pedal cycle, moped, motorcycle, other)

Month (January to December)

Day of the week (Monday to Sunday)

Hour (0-24)

² Cete-Sud Ouest (1997), A proposal for improving the comparability of road accidents within EU Member States using the CARE Database, CAREPLUS 1 Consortium, Bordeaux.

Cete-Sud Ouest (2000), A proposal for improving the comparability of road accidents within EU Member States using the CARE Database, CAREPLUS 2 Consortium, Bordeaux

Disclaimer

The information in this document is provided as it is and no guarantee or warranty is given that the information is fit for any particular purpose. Therefore, the reader uses the information at their own risk and liability.

For more information

Further statistical information about fatalities is available from the CARE database at the Directorate General for Energy and Transport of the European Commission, 28 Rue de Mot, B -1040 Brussels.

Traffic Safety Basic Fact Sheets available from the European Commission concern:

- Main Figures
- Children (Aged <15)
- Youngsters (Aged 15-17)
- Young People (Aged 18-24)
- The Elderly (Aged >64)
- Pedestrians
- Bicycles
- Motorcycles and Mopeds
- Car occupants
- Heavy Goods Vehicles
- Motorways
- Junctions
- Roads in urban areas
- Roads outside urban areas
- Seasonality
- Single vehicle accidents
- Gender

Detailed data on traffic accidents are published annually by the European Commission in the Annual Statistical Report. This includes a glossary of definitions on all variables used (www.erso.eu).

More information on the DaCoTA Project, co-financed by the European Commission, Directorate-General for Mobility and Transport is available at the DaCoTA Website: <http://www.dacota-project.eu/index.html>.

Authors:

George Yannis, Petros Evgenikos, Efi Argyropoulou, Panagiotis Papantoniou	NTUA, Greece
Jeremy Broughton, Jackie Knowles	TRL, UK
Christian Brandstaetter	KfV, Austria
Martine Reurings, Martijn Vis	SWOV, The Netherlands
Jean-François Pace, Elena López-de-Cozar, Patricia Pérez-Fuster and Jaime Sanmartín	INTRAS-UVEG, Spain
Mouloud Haddak	IFSTTAR, France

2 Overview – major issues

2.1 EU – Developments (includes databases other than CARE)

Figure 1: Annual number of fatalities, injury accidents and injured people (EU-27), 2001-2010

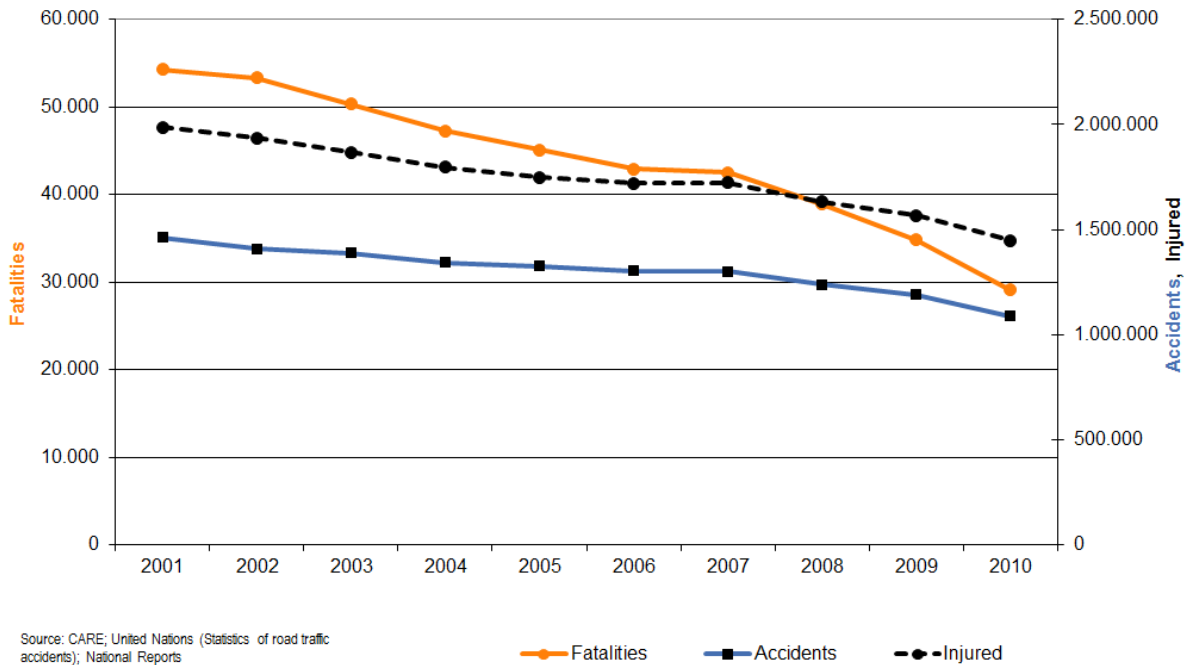
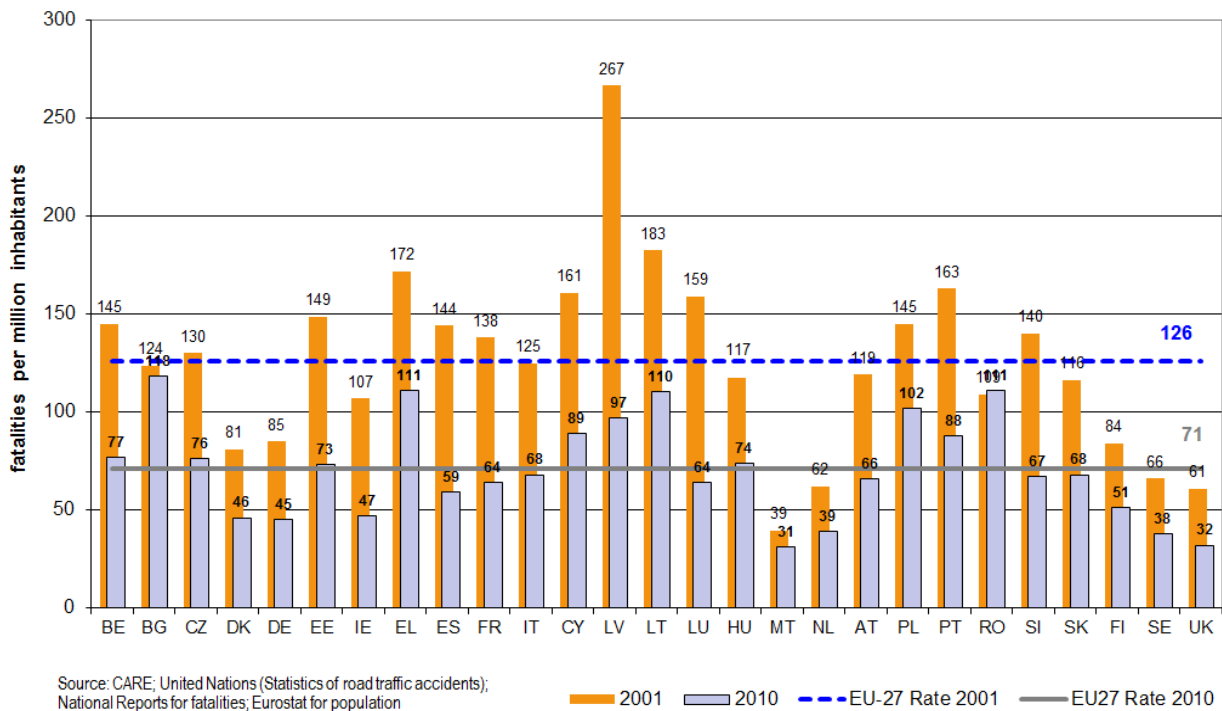


Figure 2: Fatalities per million inhabitants, 2010 compared to 2001 (EU-27)



Interesting Details

Figure 3: Share of fatalities by area type in EU-21, 2010

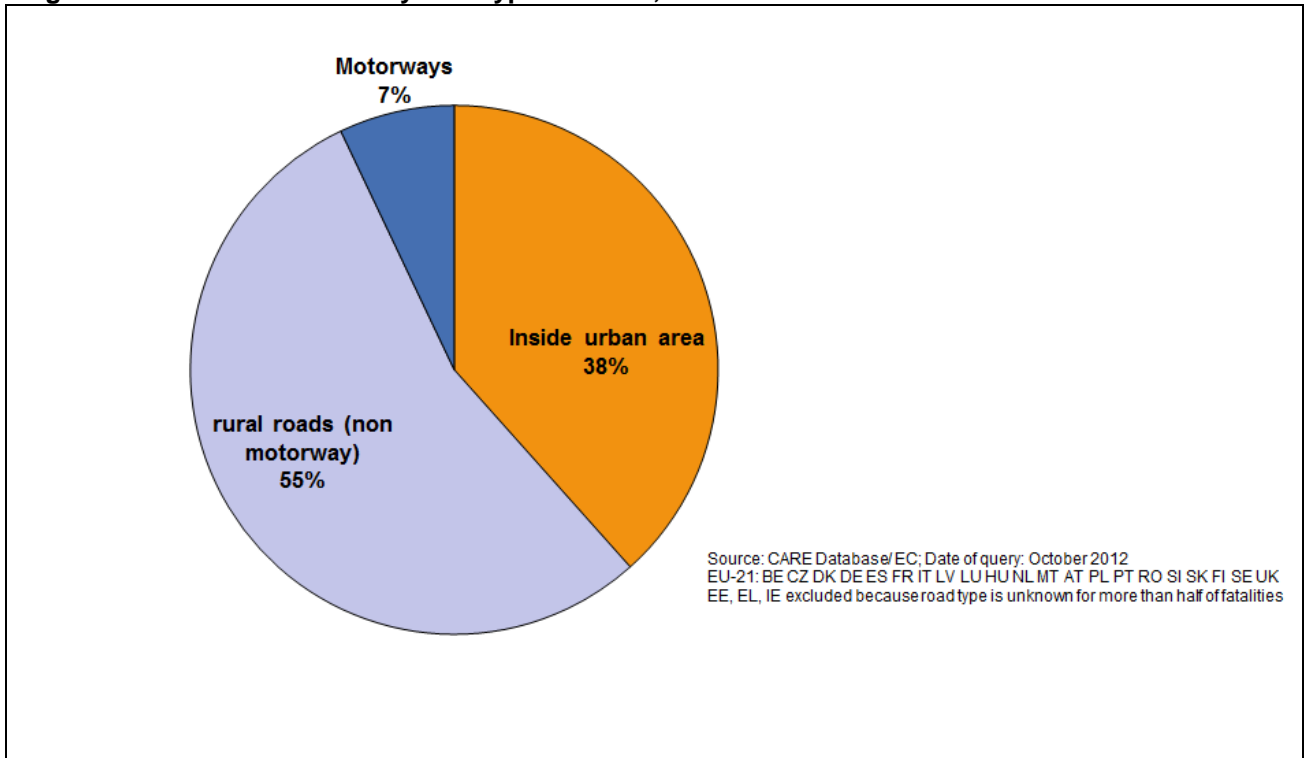


Figure 4: Distribution of male and female fatalities by person class in EU-24, 2010

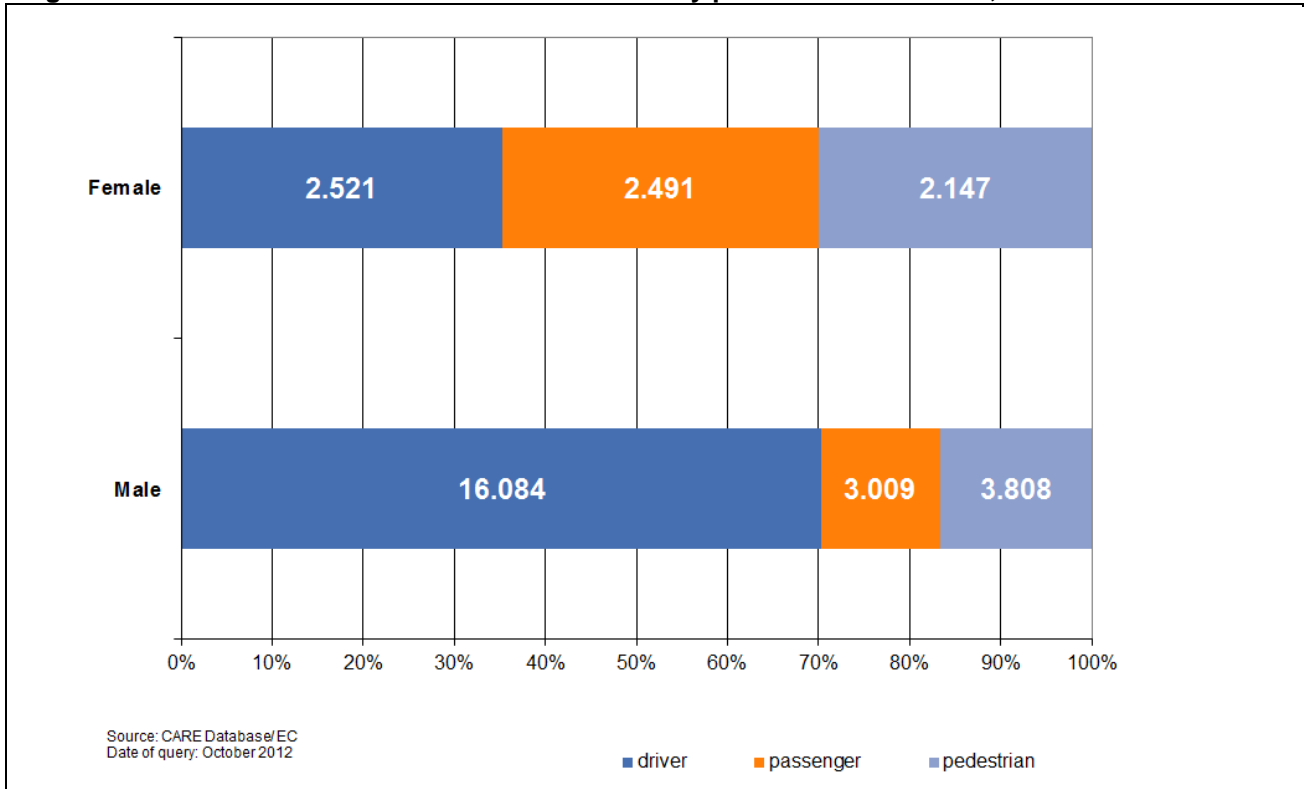
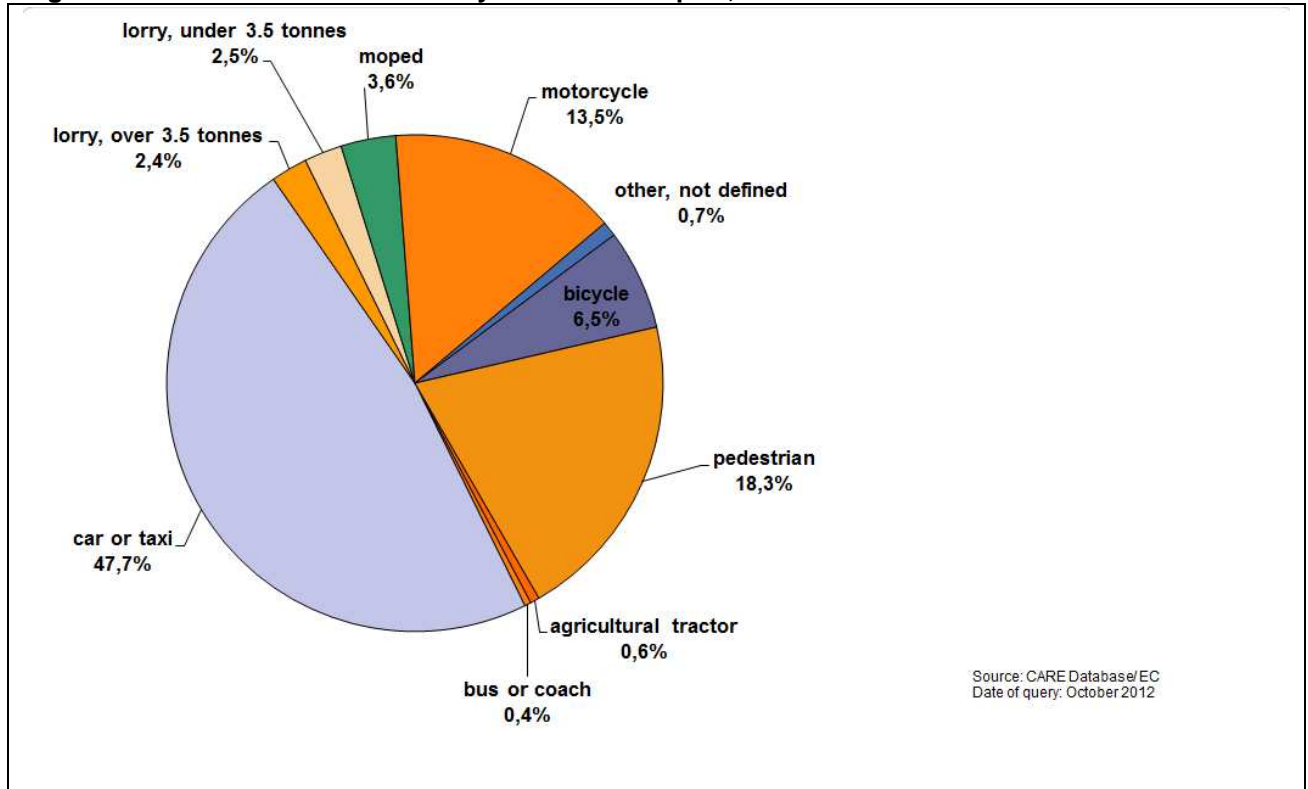


Figure 5: Distribution of fatalities by mode of transport, 2010



3 Time Series – last 10 years

3.1 General time series

Figure 6: Percentage change in number of fatalities and injury accidents by country (2010 compared to 2001)

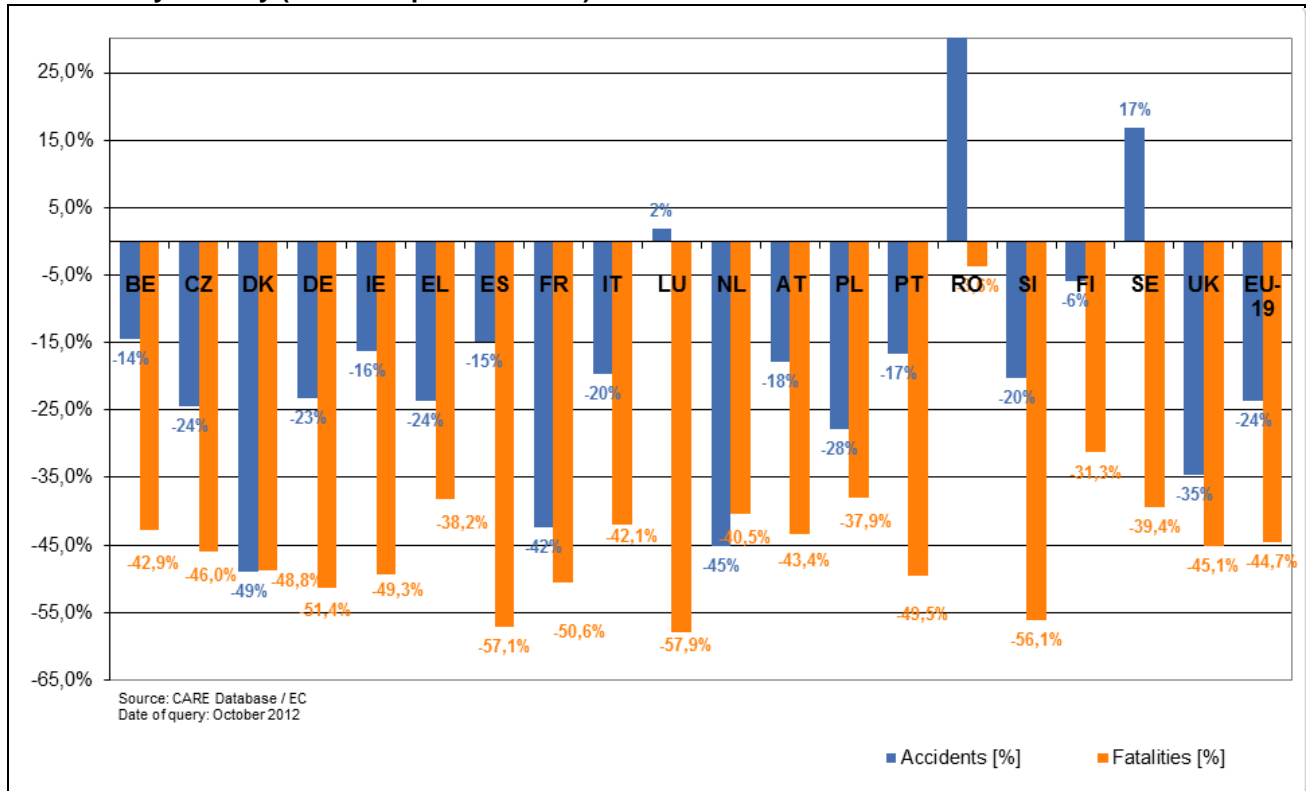


Table 1: Annual number of injury accidents by country, 2001-2010

	2001	2002	2003	2004	2005	2006	2007	2008	2009	2010
BE	47.444	43.693	43.853	43.565	40.366	41.114	43.239	42.115	41.944	40.569
CZ	26.026	26.585	27.320	26.516	25.239	22.115	23.060	22.481	21.706	19.675
DK	6.856	7.122	6.748	6.207	5.412	5.403	5.549	5.020	4.174	3.498
DE	375.345	362.054	354.534	339.308	336.618	327.984	335.845	320.614	310.806	288.297
IE	6.909	6.625	5.984	5.780	6.533	6.018	5.467	6.736	6.615	5.779
EL	19.671	16.809	15.751	15.547	16.914	16.019	15.499	15.083	14.789	15.032
ES	100.393	98.433	99.987	94.009	91.187	99.797	100.508	93.161	88.251	85.503
FR	116.745	105.470	90.220	85.390	84.525	80.309	81.272	74.487	72.315	67.288
IT	263.100	265.402	252.271	243.490	240.011	238.124	230.871	218.963	215.403	211.404
LU	772	769	720	716	777	805	954	927	869	787
NL	35.313	33.538	31.635	27.758	27.007	24.527	25.819	23.708	19.378	
AT	43.073	43.175	43.423	42.657	40.896	39.884	41.096	39.173	37.925	35.348
PL	53.798	53.558	51.076	51.068	48.100	46.875	49.536	49.054	44.195	38.832
PT	42.521	42.219	41.495	38.930	37.066	35.680	35.311	33.613	35.484	35.426
RO	7.528	7.453	6.942	7.336	19.820	21.904	24.662	29.861	28.612	25.995
SI	9.595	10.541	11.910	12.890	10.509	11.620	11.640	9.165	8.717	7.659
FI	6.451	6.196	6.907	6.767	7.020	6.740	6.657	6.881	6.414	6.072
SE	15.796	16.947	18.365	18.029	18.094	18.213	18.548	18.462	18.027	
UK	236.461	228.535	220.079	213.043	203.682	194.789	188.105	176.814	169.805	160.665
EU-19	1.413.797	1.375.124	1.329.220	1.279.006	1.259.776	1.237.920	1.243.638	1.186.318	1.145.429	1.085.234
Change	-1,7	-2,7	-3,3	-3,8	-1,5	-1,7	0,5	-4,6	-3,4	-5,3
EE					2.341	2.585	2.449	1.868	1.506	
CY				110						
LV						4.301	4.780	4.196	3.160	3.193
HU			19.976	20.957	20.777	20.977	20.634	19.174	17.863	16.308
MT					847	894	942	764	636	577
SK					7.908	7.991	8.488	8.416	6.517	6.131
EU-25	1.413.797	1.375.124	1.349.196	1.300.072	1.291.648	1.274.669	1.274.669	1.274.669	1.274.669	1.274.669
CH	-	-	-	-	30.793	-	-	20.736	20.506	19.609
IS	-	1.007	807	810	687	915	1.147	1.083	893	883

Figure 7: Annual number of injury accidents by country (BE – ES), 2001-2010

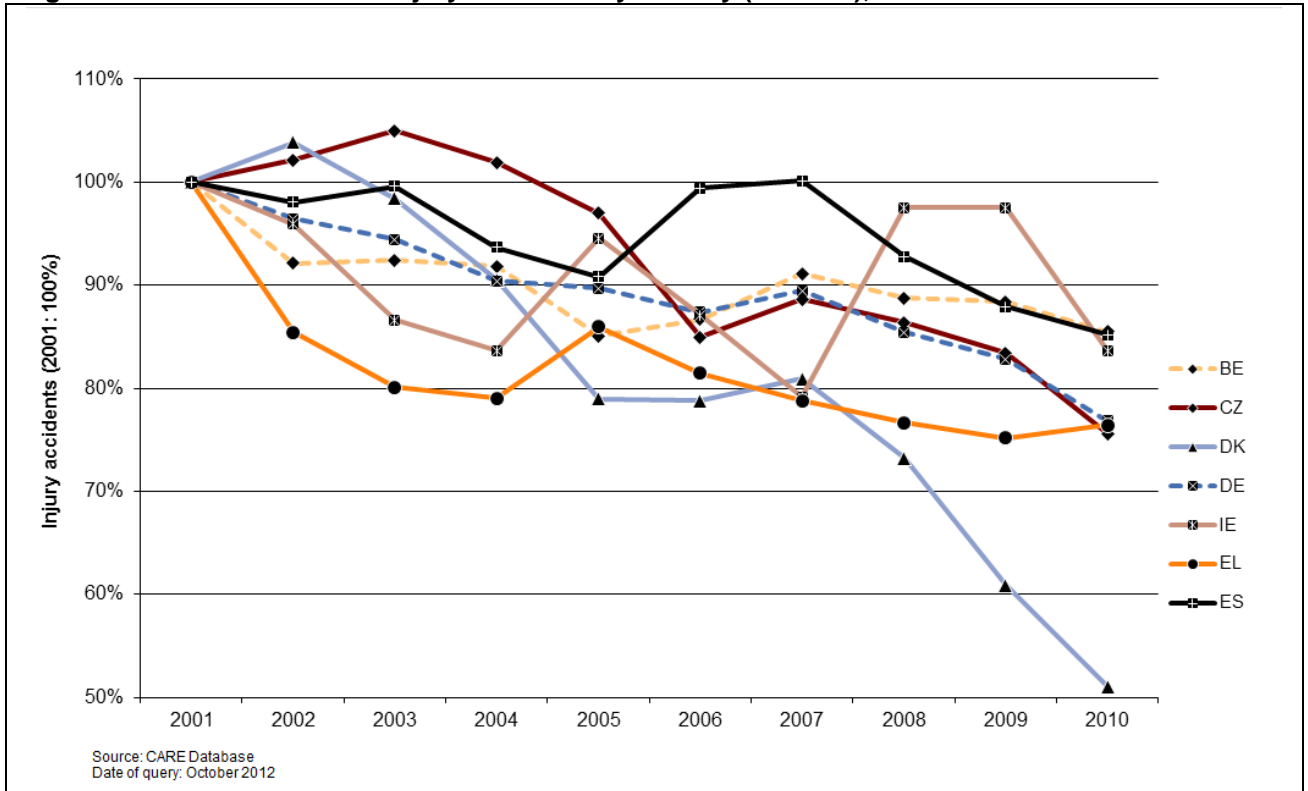


Figure 8: Annual number of injury accidents by country (FR-PL), 2001-2010

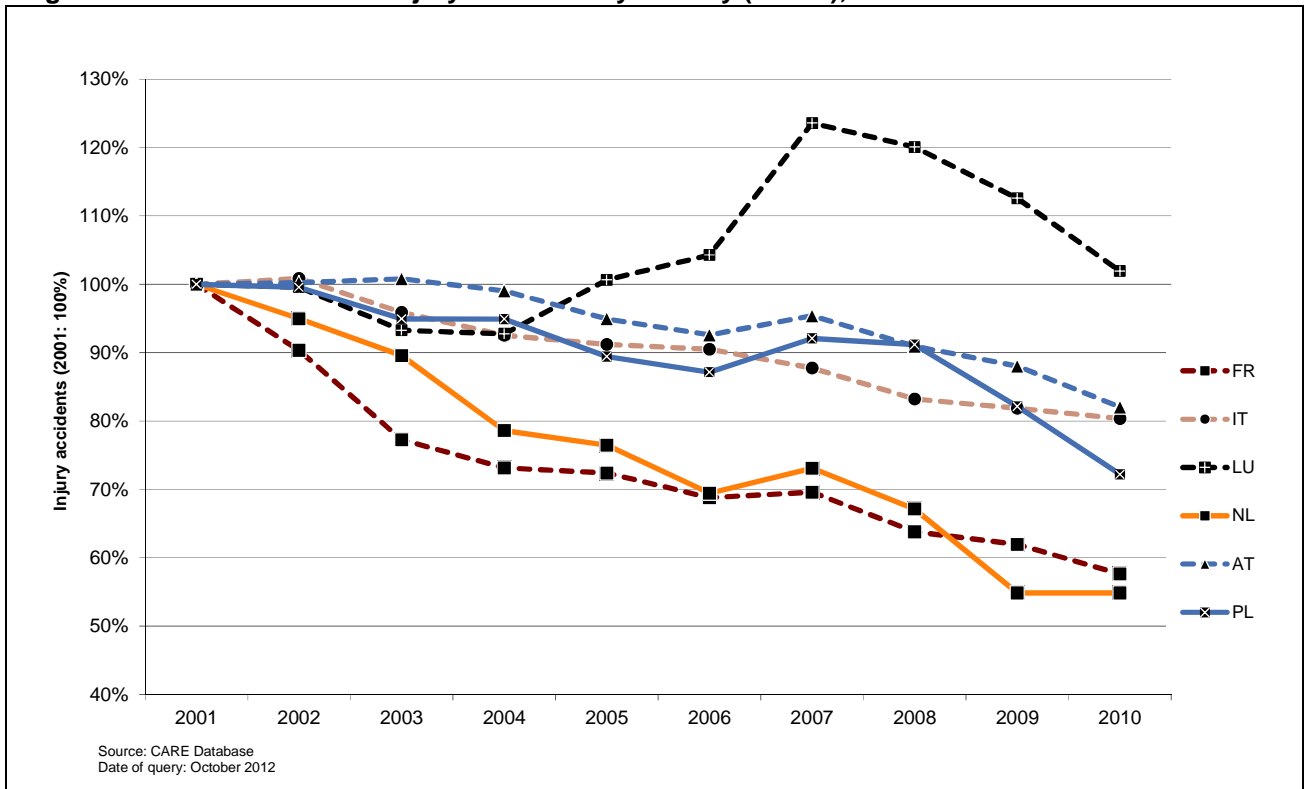


Figure 9: Annual number of injury accidents by country (PT-UK), 2001-2010

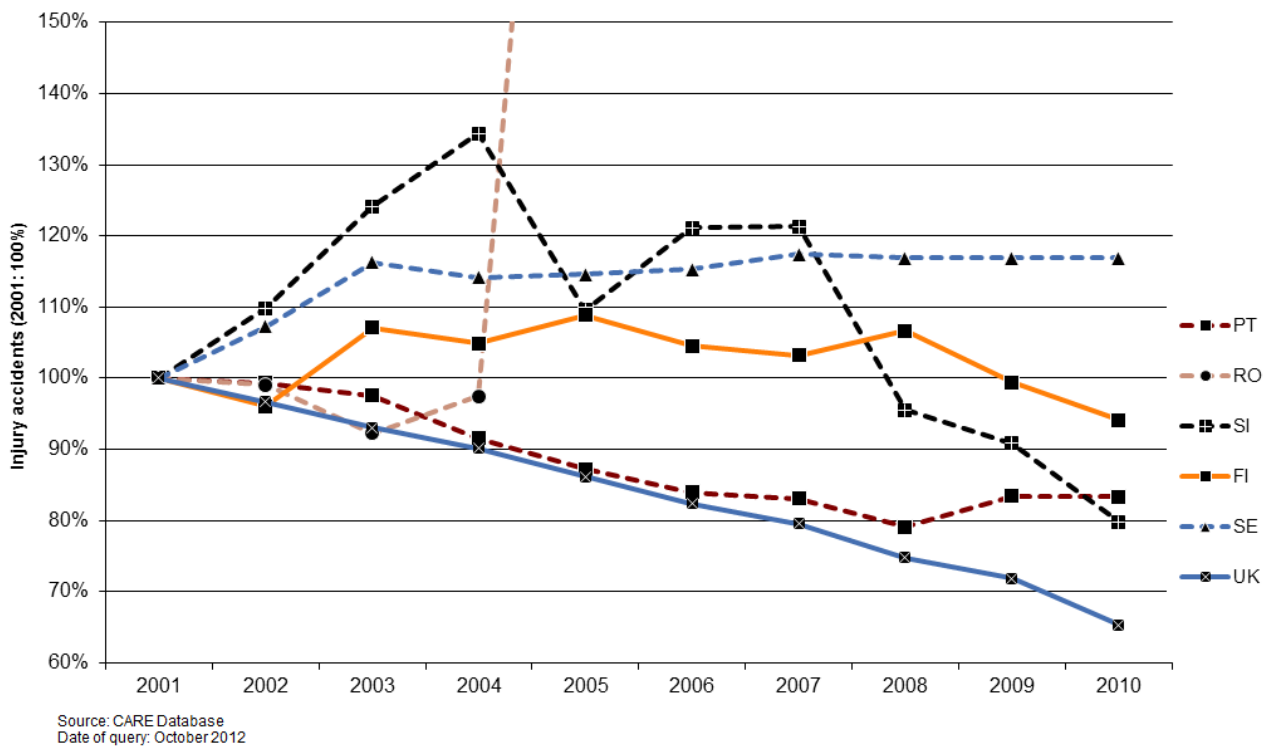


Table 2: Annual number of fatalities by country, 2001-2010

	2001	2002	2003	2004	2005	2006	2007	2008	2009	2010
BE	1.486	1.306	1.213	1.162	1.089	1.069	1.071	944	944	840
CZ	1.333	1.430	1.447	1.382	1.286	1.063	1.221	1.076	901	802
DK	431	463	432	369	331	306	406	406	303	255
DE	6.977	6.842	6.613	5.842	5.361	5.091	4.949	4.477	4.152	3.648
IE	412	378	337	377	400	365	338	280	238	212
EL	1.880	1.634	1.605	1.670	1.658	1.657	1.612	1.553	1.456	1.258
ES	5.516	5.347	5.400	4.741	4.442	4.104	3.822	3.099	2.714	2.479
FR	8.160	7.655	6.058	5.530	5.318	4.709	4.620	4.275	4.273	3.992
IT	7.096	6.980	6.563	6.122	5.818	5.669	5.131	4.725	4.237	4.090
LU	70	62	53	50	47	43	46	35	48	32
NL	993	987	1.028	804	750	730	709	677	644	
AT	958	956	931	878	768	730	691	679	633	552
PL	5.534	5.826	5.642	5.712	5.444	5.243	5.583	5.437	4.572	3.908
PT	1.671	1.675	1.546	1.294	1.247	969	974	885	840	937
RO	2.450	2.411	2.229	2.444	2.629	2.587	2.800	3.065	2.797	2.377
SI	278	269	242	274	258	262	293	214	171	138
FI	433	415	379	375	379	336	380	344	279	272
SE	583	560	529	480	440	445	471	397	358	
UK	3.598	3.581	3.658	3.368	3.336	3.298	3.059	2.645	2.337	1.965
EU-19	49.859	48.777	45.905	42.874	41.001	38.676	38.176	35.213	31.897	28.759
Yearly Change	-4,0	-2,2	-5,9	-6,6	-4,4	-5,7	-1,3	-7,8	-9,4	-9,8
CY				117						
EE					170	204	196	132	98	
HU			1.326	1.296	1.278	1.303	1.232	996	822	740
MT					17	11	12	9	15	13
LV				516	442	407	419	316	254	218
SK					606	614	661	606	384	371
EU-25	49.859	48.777	45.905	42.874	41.001	38.676	38.176	35.213	31.897	28.759
CH				510				357	349	327
IS		29	23	23	19	31	15	12	17	8

Figure 10: Annual number of fatalities by country (BE-ES), 2001-2010

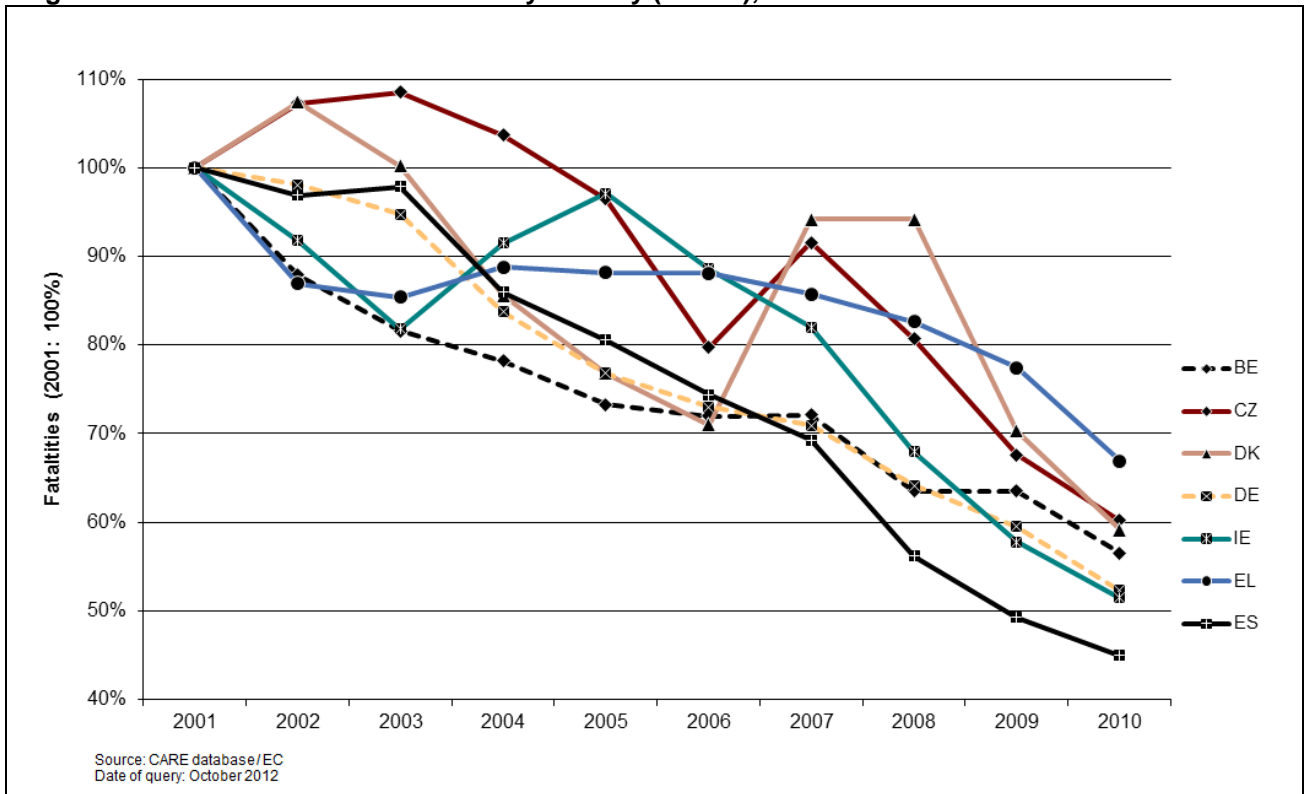


Figure 11: Annual number of fatalities by country (FR-PL), 2001-2010

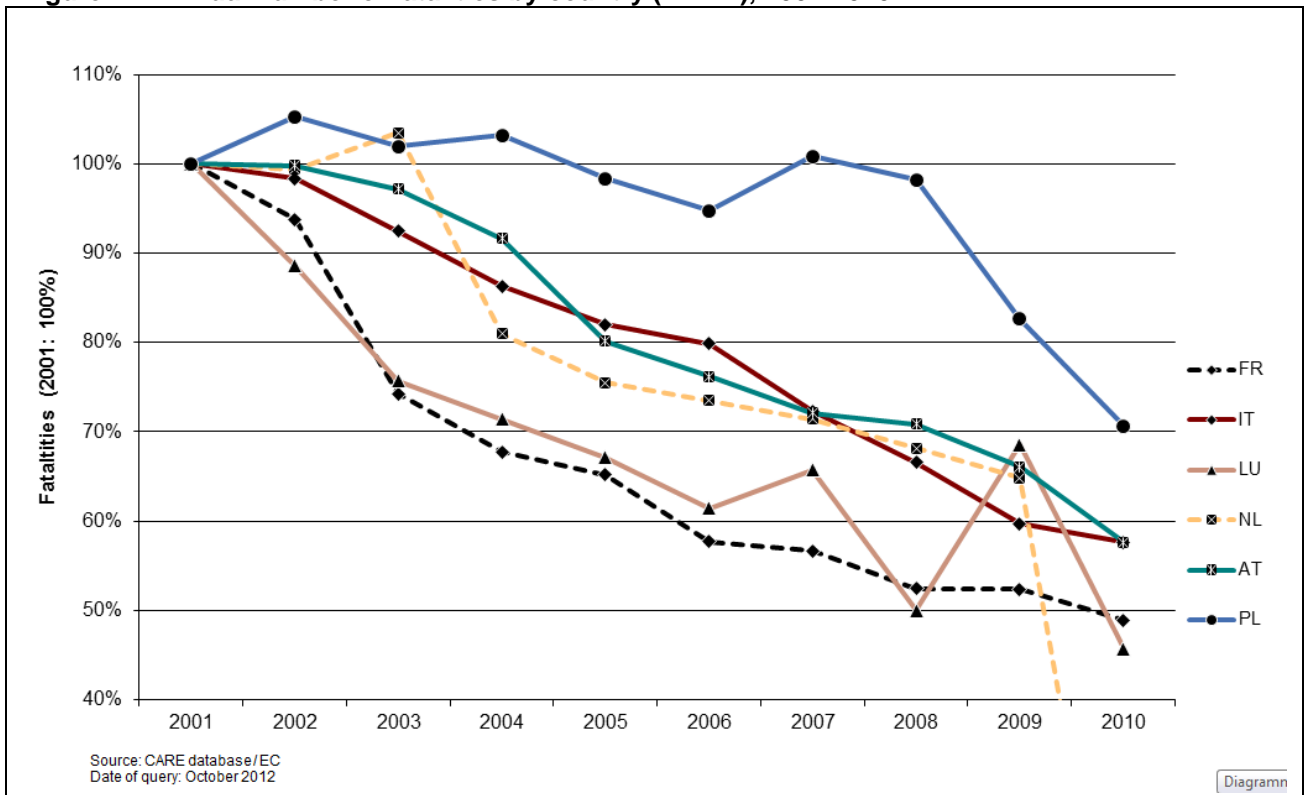


Figure 12: Annual number of fatalities by country (PT-UK), 2001-2010

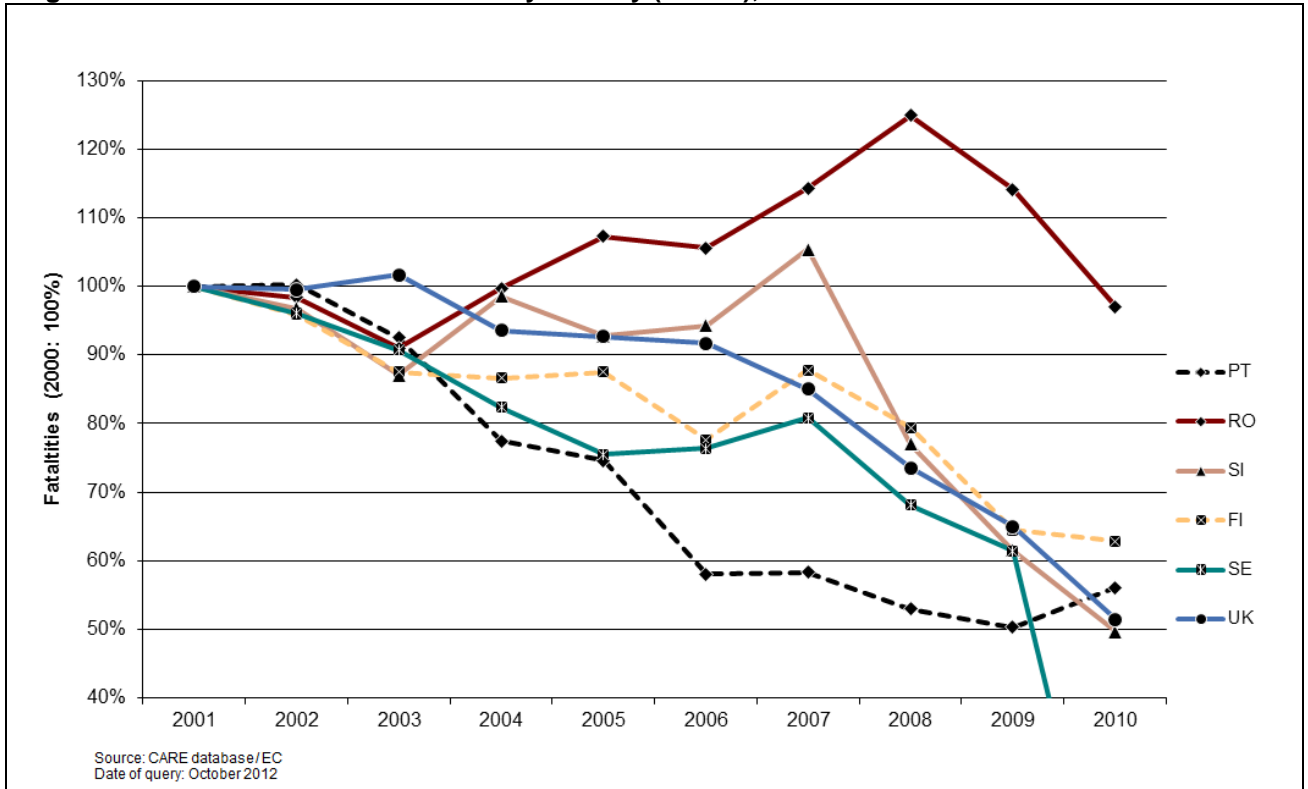


Table 3: Annual number of fatal accidents by country, 2001-2010

	2000	2001	2002	2003	2004	2005	2006	2007	2008	2009
BE	1.356	1.378	1.217	1.142	1.096	997	1.001	1.006	869	884
CZ	1.207	1.077	1.185	1.172	1.070	1.005	853	1.018	908	846
DK	436	354	371	382	341	305	284	366	378	271
DE	6.827	6.392	6.213	6.054	5.361	4.984	4.717	4.609	4.117	3.867
IE	362	360	346	301	334	360	321	309	254	
EL	1.803	1.669	1.438	1.400	1.484	1.482	1.501	1.442	1.411	1.296
ES	4.372	4.170	4.031	4.084	3.643	3.377	3.119	2.957	2.385	2.117
FR	6.811	6.920	6.549	5.168	4.766	4.857	4.326	4.265	3.933	3.956
IT	6.435	6.455	6.332	5.929	5.548	5.271	5.178	4.718	4.358	3.973
LU	68	65	52	48	48	42	41	43	34	44
NL	1.006	932	913	940	747	708	678	669	630	597
AT	889	861	873	848	818	712	664	644	629	576
PL	3.359	4.919	5.227	5.038	5.179	4.878	4.663	5.028	4.862	4.144
PT	1.450	1.316	1.323	1.222	1.024	988	786	765	721	673
RO	2.187	2.147	2.145	1.978	2.175	2.293	2.274	2.462	2.651	2.464
SI	290	243	240	220	253	230	233	263	200	154
FI	354	386	367	346	323	343	324	349	321	255
SE	535	511	490	460	430	406	404	426	355	
UK	3.257	3.313	3.260	3.375	3.106	3.040	3.036	2.819	2.439	2.161
EU-19	43.004	43.468	42.572	40.107	37.746	36.278	34.403	34.158	31.455	28.887
Yearly Change		1,1	-2,1	-5,8	-5,9	-3,9	-5,2	-0,7	-7,9	-8,2
EE						151	183	174	114	86
CY					110					
LV							366	376	285	227
HU				1.135	1.168	1.139	1.173	1.106	890	752
MT						12	11	12	9	11
SK						492	519	569	511	306
EU-25	43.004	43.468	42.572	41.242	39.024	38.072	36.655	36.395	33.264	30.269
CH					478				336	335
IS			22	20	20	16	28	15	12	15

3.2 Time series related to mode of transport

Figure 13: Percentage change in number of fatalities by mode of transport in EU-18 (2010 compared to 2001)

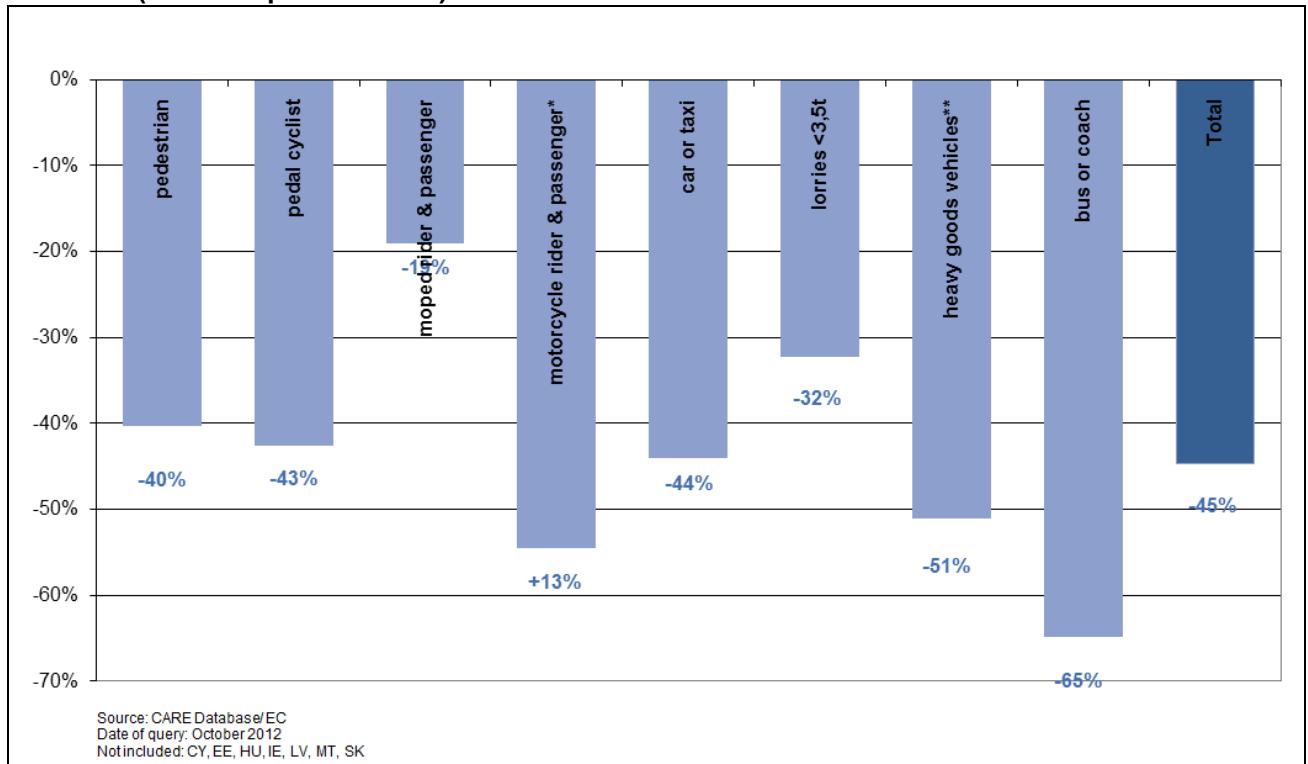


Table 4: Annual number of pedestrian fatalities by country, 2001-2010

	2001	2002	2003	2004	2005	2006	2007	2008	2009	2010
BE	158	127	113	101	108	122	104	99	101	106
CZ	322	308	290	281	298	202	232	238	176	168
DK	49	63	49	43	44	60	68	58	52	44
DE	900	873	812	838	686	711	695	653	591	476
IE	89	86	64	66	72	72	81	49	49	44
EL	338	279	257	293	234	267	255	248	202	179
ES	846	776	786	683	680	614	591	502	470	471
FR	822	866	626	581	635	535	561	548	496	485
IT	1.032	1.226	871	810	786	758	627	646	667	614
LU	11	6	7	12	2	10	7	6	12	1
NL	106	97	97	68	83	66	86	56	63	
AT	117	160	132	132	97	110	108	102	101	98
PL	1.866	1.987	1.879	1.987	1.756	1.802	1.951	1.882	1.467	1.236
PT	337	339	280	233	214	156	156	155	148	195
RO	1.088	1.101	944	1.059	978	1.034	1.113	1.067	1.016	868
SI	42	41	38	35	37	36	32	39	24	26
FI	62	40	59	49	45	49	48	53	30	35
SE	87	58	55	67	50	55	58	45	45	44
UK	858	808	802	694	699	697	663	591	524	429
EU-19	9.130	9.241	8.161	8.032	7.504	7.356	7.436	7.037	6.234	5.582
Yearly Change	-3,7	1,2	-11,7	-1,6	-6,6	-2,0	1,1	-5,4	-11,4	-10,5
EE					50	64	38	41	23	
CY				18						
LV				197	174	153	158	105	82	79
HU			299	326	289	296	288	251	186	192
MT					6	4	3	1	4	2
SK					174	214	217	204	113	126
EU-25	9.130	9.241	8.460	8.573	8.197	8.087	8.140	7.639	6.642	6.004
CH				95				59	60	75
IS		1	3	3	1	4	1	0	2	2

Table 5: Annual number of pedal cyclist fatalities by country (includes all riders and passengers of pedal cycles), 2001-2010

	2001	2002	2003	2004	2005	2006	2007	2008	2009	2010
BE	130	105	110	79	71	92	90	86	89	70
CZ	141	160	159	131	115	110	116	93	84	80
DK	56	52	47	53	41	31	54	54	25	26
DE	635	583	616	475	575	486	425	456	462	381
IE	12	18	10	11	10	9	15	7	13	5
EL	29	14	21	24	18	21	16	22	15	23
ES	100	96	78	88	82	72	90	59	57	67
FR	256	223	201	177	180	181	142	148	162	147
IT	366	326	355	322	335	311	352	288	295	263
LU	1	1	0	0	1	0	0	0	2	1
NL	195	169	188	157	151	179	147	145	138	
AT	55	80	56	58	47	48	37	62	39	32
PL	610	681	647	691	603	509	498	433	371	280
PT	50	58	63	47	48	40	34	42	29	33
RO	145	132	156	130	206	198	179	179	157	182
SI	16	18		22	19	15	17	16	18	17
FI	59	53	39	26	43	29	22	18	20	26
SE	43	42	35	27	38	26	33	30	20	
UK	140	133	116	136	152	147	138	117	104	113
EU-19	3.039	2.944	2.897	2.654	2.735	2.504	2.405	2.255	2.100	1.746
Yearly Change	-2,9	-3,1	-1,6	-8,4	3,1	-8,4	-4,0	-6,2	-6,9	-16,9
EE					50	64	38	41	23	7
CY				18						
LV				197	174	153	158	105	82	13
HU			299	326	289	296	288	251	186	92
MT					6	4	3	1	4	
SK					174	214	217	204	113	27
EU-25	3.039	2.944	3.196	3.195	3.428	3.235	3.109	2.857	2.508	1.885
CH				42				27	54	34
IS										

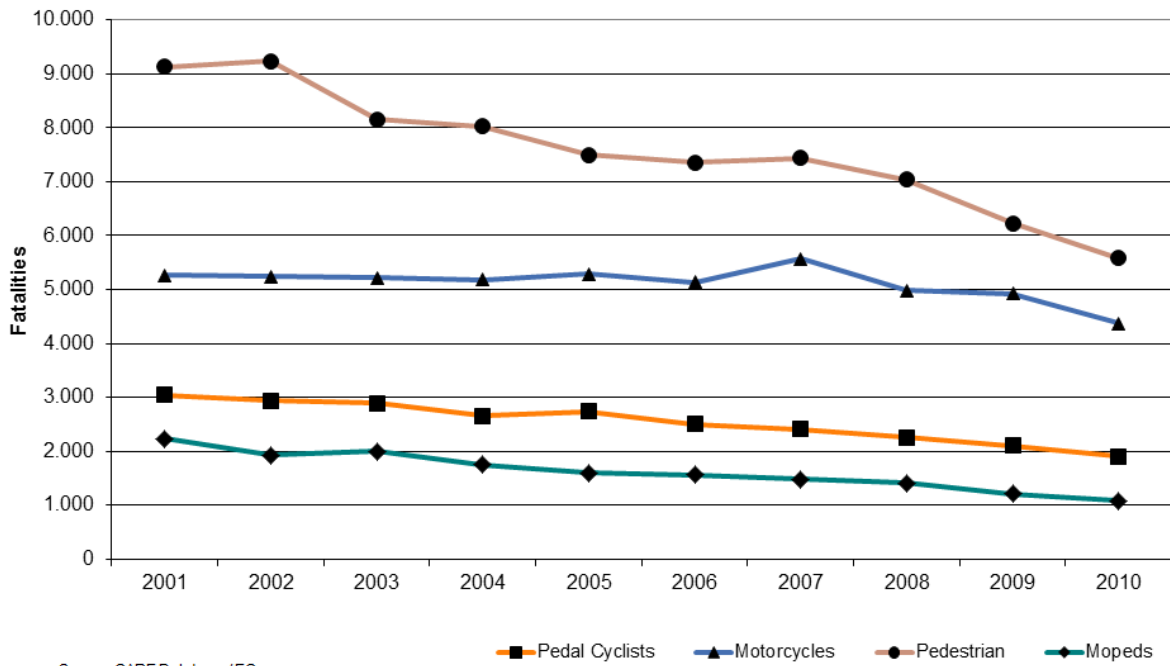
Table 6: Annual number of moped rider & passenger fatalities by country, 2001-2010

	2001	2002	2003	2004	2005	2006	2007	2008	2009	2010
BE	63	68	45	33	30	36	26	32	25	22
CZ	9	17	11	5	8	3	3	2	9	7
DK	43	38	43	46	29	24	48	30	15	11
DE	138	131	134	122	107	107	100	110	99	74
EL	77	55	53	55	58	57	43	41	28	36
ES	461	383	391	361	312	303	233	181	156	99
FR	450	387	393	339	356	317	324	291	299	248
IT	578	452	520	456	385	346	358	292	212	203
LU	0	0	0	1	0	0	1	0	0	
NL	78	98	94	57	56	63	60	51	47	
AT	37	46	47	44	41	39	24	25	30	18
PL	63	59	54	51	53	57	59	87	68	83
PT	184	145	157	121	106	97	71	71	58	77
RO	4	6	10	1	20	45	81	150	122	114
SI	16	5	4	5	5	12	12	8	3	7
FI	7	7	12	14	4	13	11	13	11	9
SE	9	12	9	18	8	15	14	11	11	
UK	14	21	25	26	23	29	18	21	16	11
EU-18	2.231	1.930	2.002	1.755	1.601	1.563	1.486	1.416	1.209	1.077
Yearly Change	-8,6	-13,5	3,7	-12,3	-8,8	-2,4	-4,9	-4,7	-14,6	-10,9
EE					2	2	4	6	3	
CY				11						
LV				4	5	6	4	4	1	4
HU			299	326	289	296	288	251	186	186
EU-22	2.231	1.930	2.301	2.096	1.897	1.867	1.782	1.677	1.399	1.270
CH				9				9	8	4

Table 7: Annual number of motorcycle rider & passenger fatalities by country, 2001-2010

	2001	2002	2003	2004	2005	2006	2007	2008	2009	2010
BE	147	158	124	120	123	130	139	108	137	102
CZ	86	117	101	97	116	113	136	121	85	92
DK	12	24	25	23	16	21	36	40	27	22
DE	964	913	946	858	875	793	807	656	650	635
IE	50	44	55	49	56	29	33	29	29	17
EL	426	341	310	379	399	440	420	394	405	367
ES	370	401	367	399	472	488	640	484	437	386
FR	1.092	1.063	883	866	892	789	853	817	908	734
IT	848	907	1.035	1.139	1.120	1.127	1.182	1.085	1.037	943
LU	6		13	10	6	8	5	9	7	1
NL	76	93	95	84	77	57	64	67	68	
AT	107	89	109	98	98	95	96	91	87	68
PL	169	167	145	181	157	164	215	262	290	259
PT	229	225	213	181	188	137	145	116	115	126
RO	9	13	8	19	23	35	73	90	74	59
SI	36	18	25	27	33	42	41	40	28	17
FI	16	22	23	22	32	26	32	36	27	18
SE	38	37	47	56	46	55	60	51	47	
UK	580	607	690	581	561	583	596	488	472	410
EU-19	5.261	5.239	5.214	5.189	5.290	5.132	5.573	4.984	4.930	4.371
Yearly Change	4,6	-0,4	-0,5	-0,5	1,9	-3,0	8,6	-10,6	-1,1	-11,3
EE					5	5	10	1	2	
CY				24						
LV						10	10	14	10	17
HU			66	72	100	89	112	91	73	49
MT					3	2	4	3	2	3
SK					45	37	54	39	34	27
EU-25	5.261	5.239	5.280	5.285	5.443	5.275	5.763	5.132	5.051	4.469
CH				114				83	78	68
IS				2	2	3	3	1	2	1

Figure 14: Annual number of fatalities by mode of transport (in which the fatality was travelling, includes driver & passenger), 2001-2010



Source: CARE Database/EC
 Date of query: October 2012
 EU-19/18: See tables 4 to 7; in IE Mopeds are not counted separately from motorcycles

Table 8: Annual number of car and taxi driver and passengers fatalities by country, 2001-2010

	2001	2002	2003	2004	2005	2006	2007	2008	2009	2010
BE	899	779	688	623	624	589	550	479	464	443
CZ	715	759	798	779	679	567	661	573	497	403
DK	242	246	236	186	169	138	168	196	164	135
DE	4.023	4.005	3.774	3.238	2.833	2.683	2.625	2.368	2.110	1.840
IE	231	202	174	205	222	226	171	160	146	129
EL	803	793	761	775	816	722	771	708	680	545
ES	3.144	3.104	3.211	2.691	2.389	2.096	1.824	1.495	1.260	1.194
FR	5.283	4.864	3.689	3.369	3.065	2.627	2.466	2.205	2.162	2.117
IT	3.847	3.653	3.377	3.032	2.830	2.781	2.320	2.115	1.793	1.827
LU	51	52	33	27	38	23	27	20	26	27
NL	477	479	483	398	337	323	299	299	288	
AT	570	524	524	480	432	384	378	367	325	291
PL	2.438	2.548	2.541	2.459	2.526	2.392	2.582	2.540	2.179	1.853
PT	636	710	630	537	495	375	417	358	301	367
RO	933	874	856	1.014	1.068	992	1.096	1.324	1.168	973
SI	107	124	102	124	107	96	126	82	59	44
FI	262	267	217	221	231	203	241	202	165	159
SE	373	379	349	288	273	261	279	234	219	
UK	1.816	1.832	1.841	1.757	1.744	1.687	1.489	1.312	1.123	895
EU-19	26.850	26.194	24.284	22.203	20.878	19.165	18.490	17.037	15.129	13.749
Yearly Change	-3	-2	-7	-9	-6	-8	-4	-8	-11	-9
EE					88	106	122	69	54	
CY				37						
LV						182	203	167	115	91
HU			640	606	620	630	555	448	386	330
MT					3	5	4	4	9	9
SK					294	282	293	292	182	171
EU-25	26.850	26.194	24.924	22.846	21.883	20.370	19.667	18.017	15.875	14.404
CH				238				156	136	129
IS		26	17	15	15	20	11	10	9	4

Table 9: Annual number of heavy goods vehicles >3,5t fatalities by country, 2001-2010

	2001	2002	2003	2004	2005	2006	2007	2008	2009	2010
BE	28	15	15	18	16	16	25	25	20	13
CZ	22	20	29	32	26	22	21	18	20	27
DK	2	5	2	3	2	2	4	2	3	2
DE	93	113	107	105	97	113	131	91	79	87
IE	6	3	8	7	4	2	7	4	4	2
EL	28	23	26	19	15	23	14	19	7	14
ES	151	173	160	151	141	132	90	85	69	71
FR	143	132	113	85	90	87	68	76	54	65
IT	76	59	71	54	63	50	59	45	35	169
LU	1	3	0	0	0	2	4	0	0	1
NL	16	11	8	10	11	9	7	10	4	
AT	14	12	14	21	11	15	11	3	9	7
PL	243	270	264	229	217	227	198	175	136	142
PT	30	18	31	27	31	18	25	17	29	12
RO	56	44	61	45	40	26	25	26	14	13
SI	3	5	0	4	3	2	4	0	0	1
FI	6	5	9	2	6	7	7	5	6	9
SE	5	13	6	5	6	7	6	5	3	
UK	57	63	46	47	59	41	54	24	15	29
EU-19	980	987	970	864	838	801	760	630	507	671
Yearly Change	-10,6	0,7	-1,7	-10,9	-3,0	-4,4	-5,1	-17,1	-19,5	32,3
EE					7	6	3	3	6	
CY				0						
LV				7	3	13	12	3	5	5
HU			14	27	15	28	15	22	12	11
MT								1		
SK					18	20	22	18	17	19
EU-25	980	987	984	898	881	868	812	677	547	712
CH				6				3	1	2
IS			2	1	0	0	0	1	1	1

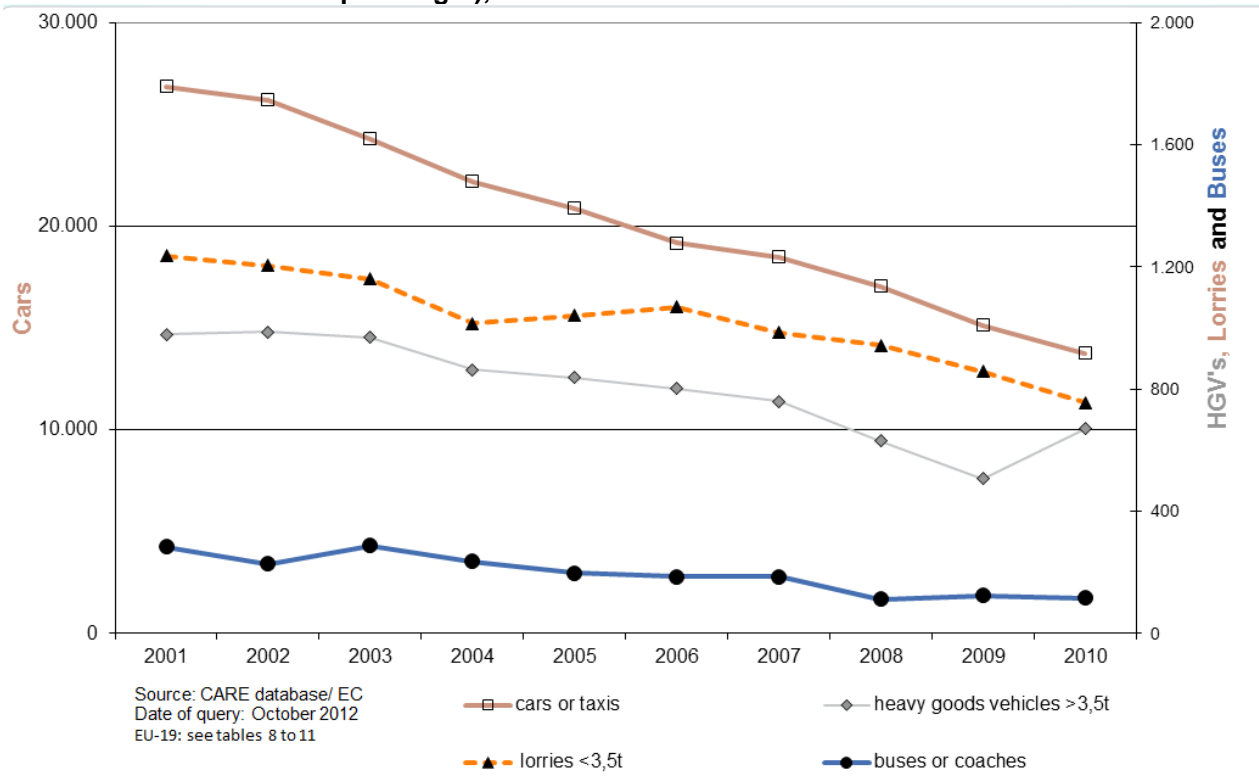
Table 10: Annual number of lorries <3,5t fatalities by country, 2001-2010

	2001	2002	2003	2004	2005	2006	2007	2008	2009	2010
BE	48	40	27	32	44	34	49	40	43	35
CZ	27	32	20	35	36	31	45	27	25	18
DK	22	29	20	13	23	24	24	22	16	14
DE	137	131	129	128	116	122	84	92	85	75
IE	20	17	19	19	18	16	25	16	13	8
EL	94	72	86	74	72	82	56	62	75	62
ES	324	342	316	292	244	262	234	189	170	116
FR	79	80	79	61	56	120	131	134	144	146
IT	96	98	72	59	63	49	25	40	32	
LU	0	0	0	0	0	0	0	0	0	0
NL	42	36	55	14	20	21	35	31	24	
AT	25	19	28	22	24	16	15	19	13	10
PT	137	140	137	103	120	98	70	88	68	88
RO	89	73	68	71	116	124	105	113	87	73
SI	5	3	3	6	8	2	3	3	6	2
FI	9	12	15	14	12	3	12	9	10	9
SE	15	8	13	5	11	9	9	11	7	
UK	68	72	74	67	57	55	63	47	40	38
EU-18	1.237	1.204	1.161	1.015	1.040	1.068	985	943	858	757
Yearly Change	-0,6	-2,7	-3,6	-12,6	2,5	2,7	-7,8	-4,3	-9,0	-11,8
CY				0						
LV					3	2		2	4	
HU			31	41	44	36	47	33	28	24
MT					5					
SK					9	3	2	2	1	
EU-24	1.237	1.204	1.192	1.056	1.101	1.109	1.034	980	891	786
CH				0				5	3	6
IS		1	0	1	1	2	0	0	1	0

Table 11: Annual number of buses or coaches fatalities by country, 2001-2010

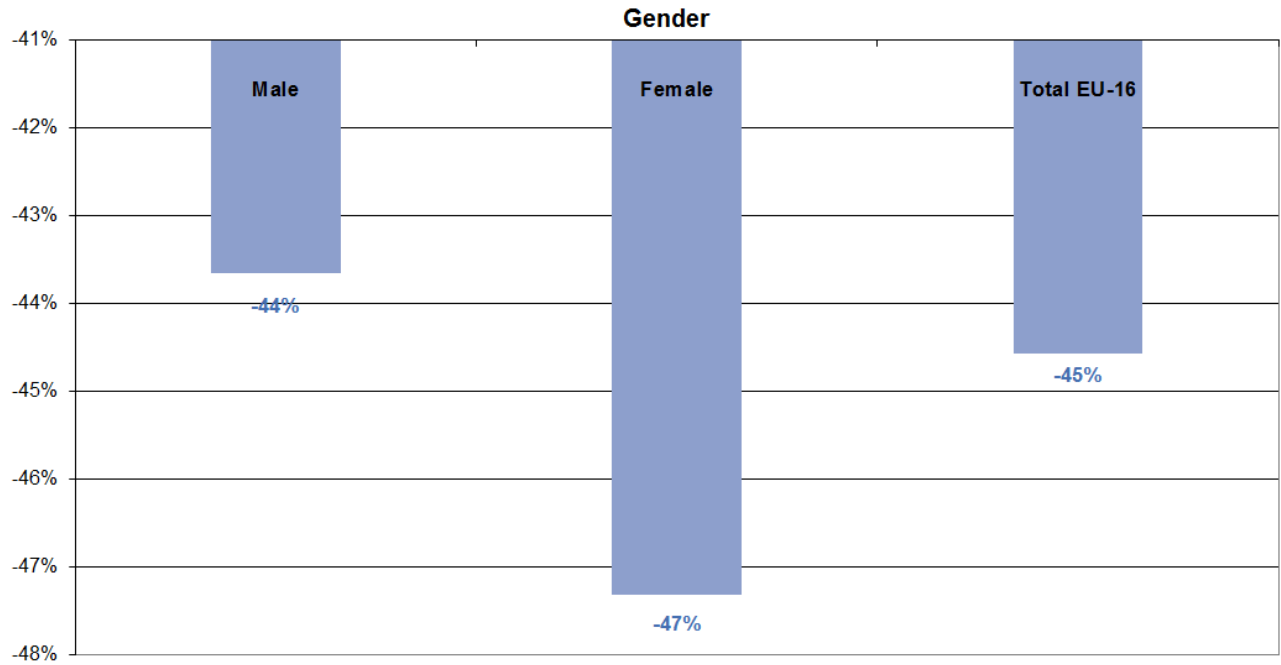
	2001	2002	2003	2004	2005	2006	2007	2008	2009	2010
BE	9	9	1	5	0	0	4	2	1	1
CZ	7	6	29	17		10	2		3	1
DK	2	4	10	1	3	3	3	0	0	0
DE	11	12	17	16	9	12	24	10	11	32
IE	0	1	0	0	5	3	1	0	0	1
EL	4	9	38	8	8	4	0	4	0	2
ES	50	15	27	5	26	37	15	28	21	5
FR	14	11	17	21	15	8	35	20	5	4
IT	19	18	23	25	12	24	18	11	2	9
LU	0	0	0	0	0	0	0	0	0	5
NL	1	1	0	0	0	1	1	3	0	
AT	14	5		9	2	8	4	2	2	8
PL	59	43	51	43	52	15	17	11	19	14
PT	28	8	2	3	2	1	15	1	6	
RO	15	52	33	26	41	19	26	6	36	10
SI	0	0	0	0	0	0	0	0	1	1
FI	3	3	0	24	2	2	0	0	1	1
SE	6	5	10	4	1	10	6	1	1	1
UK	42	26	29	28	21	28	14	14	16	15
EU-19	284	228	287	235	199	185	185	113	125	116
Yearly Change	17,4	-19,7	25,9	-18,1	-15,3	-7,0	0,0	-38,9	10,6	-7,2
EE					1	1			2	
CY				0						
LV				10	2	1	3	1	2	5
HU			38	6	4	14	14	3	3	12
MT				1	1				1	1
SK					8	4	8	4	12	
EU-25	284	228	325	252	215	205	210	121	145	148
CH				0				4	0	4
IS			0	0	0	1	0	0	0	0

Figure 15: Annual number of fatalities by mode of transport (in which the fatality was travelling, includes driver & passenger), 2001-2010



3.3 Time series related to person age and gender

Figure 16: Increase / decrease of number of fatalities by gender (EU-19), 2010 compared to 2001



Source: CARE Database/EC
 Date of query: October 2012
 EU-19: not included EE, LV, HU, MT, BK

Table 12: Annual number of fatalities by age group by country, 2001-2002

	2001						2002					
	0-14	15-17	18-24	25-49	50-64	65+	0-14	15-17	18-24	25-49	50-64	65+
BE	63	46	281	632	192	264	36	47	262	568	171	210
CZ	38	37	236	519	252	241	46	33	222	615	291	211
DK	21	23	68	147	70	102	14	26	76	172	72	103
DE	231	286	1.606	2.591	980	1.283	216	318	1.550	2.560	962	1.236
IE	26	19	114	152	45	47	18	19	79	137	43	60
EL	47	51	385	697	284	385	47	47	283	644	254	340
ES	187	199	1.088	2.686	1.001	1.369	196	187	1.109	2.670	973	1.461
FR	5	3	16	27	12	7	3	3	10	36	5	5
IT	160	201	971	2.354	811	867	151	173	935	2.298	808	835
LU	273	324	1.807	3.281	995	1.393	245	254	1.644	3.084	977	1.361
NL	48	56	162	363	142	222	37	62	205	355	114	213
AT	26	32	188	380	146	186	25	43	172	348	157	211
PL	262	204	894	2.312	952	910	248	204	958	2.346	946	976
PT	56	55	329	626	242	320	62	55	270	714	246	304
RO	187	56	311	1.007	472	417	188	44	275	966	481	458
SI	4	20	52	116	40	46	3	11	57	97	54	47
FI	19	20	84	137	77	96	18	15	73	131	79	99
SE	18	22	100	188	108	147	18	20	100	180	103	139
UK	192	205	691	1.379	447	652	160	194	725	1.372	444	655
EU-19	1.863	1.859	9.383	19.594	7.268	8.954	1.731	1.755	9.005	19.293	7.180	8.924
Yearly Change	-2,6	-2,4	-3,9	-2,4	-4,0	-2,1	-7,1	-5,6	-4,0	-1,5	-1,2	-0,3
EE												
CY												
LV												
HU												
MT												
SK												
EU-25	1.863	1.859	9.383	19.594	7.268	8.954	1.731	1.755	9.005	19.293	7.180	8.924
CH												
IS							5		4	8	6	6

Table 13: Annual number of fatalities by age group by country, 2003-2004

	2003						2004					
	0-14	15-17	18-24	25-49	50-64	65+	0-14	15-17	18-24	25-49	50-64	65+
BE	32	39	241	484	166	240	26	32	240	509	150	201
CZ	38	41	243	612	268	231	27	28	219	587	273	247
DK	22	16	67	166	62	99	20	10	67	142	50	80
DE	208	316	1.392	2.457	910	1.329	153	264	1.269	2.123	827	1.201
IE	16	12	82	126	40	53	7	15	96	134	43	61
EL	45	82	296	627	213	322	43	58	304	702	226	317
ES	148	216	989	2.560	919	1.379	124	213	956	2.400	837	1.293
FR	1	1	10	27	8	6		2	8	24	2	14
IT	156	190	972	2.368	733	817	127	169	793	2.109	677	746
LU	203	241	1.283	2.340	783	1.120	175	198	1.276	2.175	730	962
NL	64	54	179	363	147	221	35	39	154	263	113	199
AT	37	41	174	314	167	197	22	37	169	332	139	177
PL	231	154	908	2.352	953	885	228	153	851	2.250	1.104	965
PT	55	31	245	658	229	304	48	39	213	549	197	230
RO	117	46	267	945	437	417	164	67	294	965	471	486
SI	3	7	51	89	39	53	9	6	49	115	46	49
FI	22	12	59	124	66	96	13	21	74	109	61	97
SE	21	23	93	181	93	118	14	19	78	159	71	139
UK	145	201	772	1.413	452	658	147	199	728	1.290	397	589
EU-19	1.564	1.723	8.323	18.206	6.685	8.545	1.382	1.569	7.838	16.937	6.414	8.053
Yearly Change	-9,6	-1,8	-7,6	-5,6	-6,9	-4,2	-11,7	-8,9	-5,8	-7,0	-4,1	-5,8
EE												
CY								7	25	42	18	25
LV							6	21	71	219	95	80
HU	32	32	129	581	297	232	38	20	138	578	290	214
MT												
SK												
EU-25	1.596	1.755	8.452	18.787	6.982	8.777	1.426	1.617	8.072	17.776	6.817	8.372
CH							20	21	108	165	73	123
IS	2	1	5	3	5	7	3	1	4	9	2	4

Table 14: Annual number of fatalities by age group by country, 2005-2006

	2005						2006					
	0-14	15-17	18-24	25-49	50-64	65+	0-14	15-17	18-24	25-49	50-64	65+
BE	37	31	196	473	160	186	32	21	195	482	141	193
CZ	41	31	223	520	264	202	32	18	183	432	215	173
DK	13	20	52	124	52	70	13	19	65	91	46	72
DE	159	224	1.076	1.930	804	1.162	136	173	1.011	1.824	791	1.154
IE	9	26	110	139	47	56	15	18	95	133	36	66
EL	44	38	326	687	219	322	36	40	305	725	197	327
ES	131	211	919	2.284	783	1.199	110	186	825	2.290	802	1.220
FR	4	1	9	21	4	8			8	24	5	3
IT	120	138	733	1.967	688	719	109	131	601	1.952	591	671
LU	130	218	1.206	2.032	698	1.014	120	183	1.037	1.739	644	921
NL	31	33	122	261	115	188	37	33	112	233	105	209
AT	25	48	140	296	108	151	23	35	129	257	130	156
PL	167	148	933	2.100	1.030	931	151	150	895	1.959	1.054	888
PT	31	35	221	510	215	222	22	10	125	404	178	215
RO	152	56	294	1.062	574	491	145	55	293	1.036	554	504
SI	10	7	44	116	40	41	9	10	54	114	42	33
FI	21	16	53	140	58	91	5	21	67	104	68	71
SE	10	19	67	153	84	104	16	24	75	142	93	95
UK	125	222	700	1.244	420	616	147	207	706	1.234	423	572
EU-19	1.260	1.522	7.424	16.059	6.363	7.773	1.158	1.334	6.781	15.175	6.115	7.543
Yearly Change	-8,8	-3,0	-5,3	-5,2	-0,8	-3,4	-8,1	-12,4	-8,7	-5,5	-3,9	-3,0
EE	12	5	26	73	32	21	6	5	35	73	53	32
CY												
LV	10	12	63	187	76	65	14	11	59	165	74	61
HU	34	26	159	557	286	206	42	24	134	565	307	216
MT	3	3	5	3		3		1	3	5	1	1
SK	19	18	83	261	144	77	13	8	100	263	131	95
EU-25	1.338	1.586	7.760	17.140	6.901	8.145	1.233	1.383	7.112	16.246	6.681	7.948
CH												
IS		2	6	3	6	2	1	3	7	11	5	4

Table 15: Annual number of fatalities by age group by country, 2007-2008

	2007						2008					
	0-14	15-17	18-24	25-49	50-64	65+	0-14	15-17	18-24	25-49	50-64	65+
BE	30	27	215	464	159	170	35	28	177	411	139	149
CZ	25	29	190	523	230	201	19	14	193	437	209	186
DK	20	18	58	145	69	95	19	14	69	146	61	97
DE	111	176	971	1.799	736	1.153	102	174	887	1.515	727	1.066
IE	15	14	76	123	45	58	18	20	75	91	24	47
EL	42	43	280	685	207	330	35	41	246	658	221	329
ES	95	190	723	2.187	681	1.105	85	163	634	1.937	660	1.099
FR	2	2	8	22	4	7			8	16	5	4
IT	99	135	550	1.817	566	604	83	95	469	1.400	465	544
LU	150	166	984	1.789	627	896	114	136	956	1.624	622	823
NL	36	32	134	223	103	181	23	32	107	228	113	174
AT	13	32	135	254	112	145	12	26	134	220	115	172
PL	157	181	953	2.112	1.140	945	146	185	948	1.982	1.163	962
PT	27	11	148	385	171	225	23	11	113	363	174	197
RO	116	52	402	1.040	569	621	137	58	439	1.182	678	571
SI	6	6	64	126	40	51	4	10	38	87	41	34
FI	14	18	75	118	76	79	8	26	50	111	56	93
SE	10	22	86	148	100	105	6	13	64	142	70	102
UK	96	192	639	1.142	407	575	110	160	542	989	344	499
EU-19	1.064	1.346	6.691	15.102	6.042	7.546	979	1.206	6.149	13.539	5.887	7.148
Yearly Change	-8,0	0,9	-1,3	-0,5	-1,2	0,0	-8,1	-10,4	-8,1	-10,4	-2,6	-5,2
EE	6	8	41	70	27	41	3	4	28	40	28	29
CY												
LV	11	15	44	169	90	73	11	13	48	126	63	55
HU	37	30	139	541	264	209	24	32	103	407	237	179
MT			4	5		3			2	5		2
SK	28	6	87	274	129	97	23	9	92	198	111	72
EU-25	1.146	1.405	7.006	16.161	6.552	7.969	1.040	1.264	6.422	14.315	6.326	7.485
CH							10	12	44	123	65	103
IS	1		2	7	2	3			3	2	3	4

Table 16: Annual number of fatalities by age group by country, 2009-2010

	2009						2010					
	0-14	15-17	18-24	25-49	50-64	65+	0-14	15-17	18-24	25-49	50-64	65+
BE	16	21	147	355	150	163	23	21	171	343	124	153
CZ	16	13	133	405	166	167	17	17	125	329	142	172
DK	10	17	53	121	41	61	9	8	42	81	48	67
DE	90	133	796	1.351	678	1.104	104	101	690	1.218	624	910
IE							6	7	56	83	26	30
EL	43	37	242	617	211	275	30	39	186	521	190	268
ES	71	121	579	1.596	669	1.111	69	118	546	1.562	643	1.059
FR	6		10	12	11	9			10	13	6	3
IT	61	70	357	1.273	412	507	79	49	311	1.087	407	527
LU	122	189	901	1.653	612	796	130	161	831	1.513	592	765
NL	23	26	126	191	91	187						
AT	15	29	99	229	102	159	10	27	102	178	95	140
PL	128	120	833	1.668	970	810	112	122	677	1.419	871	674
PT	23	19	109	331	150	205	18	7	88	378	168	278
RO	125	58	416	1.000	597	571	95	50	307	849	577	494
SI	2	4	30	61	35	39	2	4	19	54	29	30
FI	6	23	51	84	46	69	7	13	48	93	47	64
SE												
UK	69	126	467	913	330	432	41	88	351	678	321	371
EU-19	826	1.006	5.349	11.860	5.271	6.665	752	832	4.560	10.399	4.910	6.005
Yearly Change	-13,2	-13,8	-10,7	-10,7	-8,9	-4,4	-11,5	-19,9	-16,9	-14,0	-8,5	-11,9
EE	4	2	21	39	13	18						
CY												
LV	7	4	31	115	48	49	9	2	35	75	53	44
HU	22	16	81	353	184	166	20	10	73	304	184	149
MT	1		2	5	2	5	1		4	7	1	
SK	9	5	53	122	80	51	11	7	59	126	67	48
EU-25	869	1.033	5.537	12.494	5.598	6.954	793	851	4.731	10.911	5.215	6.246
CH	21	5	68	97	68	90	8	12	36	105	65	101
IS		1	1	8	4	3			3	1	2	2

Table 17: Annual number of female fatalities by country, 2001-2010

	2001	2002	2003	2004	2005	2006	2007	2008	2009	2010
BE	384	341	299	250	260	248	215	221	234	203
CZ	338	352	325	326	298	225	275	259	225	177
DK	117	119	122	98	80	87	105	107	91	85
DE	1.923	1.889	1.757	1.571	1.445	1.371	1.309	1.229	1.102	997
IE	103	101	79	102	102	97	85	75	75	46
EL	416	351	289	364	355	290	338	304	250	245
ES	1.325	1.263	1.246	1.124	958	899	823	676	621	556
FR	2.057	1.869	1.435	1.349	1.314	1.155	1.118	1.013	1.041	953
IT	1.754	1.578	1.409	1.245	1.243	1.277	1.005	960	926	841
LU	17	12	10	16	17	10	7	8	13	8
NL	246	246	262	224	210	212	192	179	175	
AT	251	276	251	215	195	190	161	170	155	143
PL	1.322	1.363	1.324	1.291	1.243	1.232	1.333	1.321	1.109	913
PT	363	348	302	264	233	182	188	209	173	203
RO	579	596	504	603	688	661	740	765	694	575
SI	51	67	54	54	71	42	59	36	39	34
FI	137	114	107	118	96	95	101	79	71	68
SE	149	137	138	116	113	112	127	111	111	92
UK	864	915	920	829	816	806	752	682	597	512
EU-19	12.396	11.937	10.833	10.159	9.737	9.191	8.933	8.404	7.702	6.826
Yearly Change	-1,0	-3,7	-9,2	-6,2	-4,2	-5,6	-2,8	-5,9	-8,4	-11,4
EE					42	50	45	34	26	
CY				21						
LV				141	118	97	100	77	42	26
HU			318	302	308	293	314	237	207	181
MT					4		1	3	5	5
SK					144	134	156	111	88	92
EU-25	12.396	11.937	10.833	10.159	9.737	9.191	8.933	8.404	7.702	6.826
CH				115				90	80	83
IS		14	8	7	6	11	2	2	3	4

Table 18: Annual number of male fatalities by country, 2001-2010

	2001	2002	2003	2004	2005	2006	2007	2008	2009	2010
BE	1.102	962	911	908	823	818	850	717	705	629
CZ	995	1.078	1.122	1.056	988	838	946	817	659	607
DK	314	344	310	271	251	219	300	299	212	170
DE	5.052	4.952	4.854	4.264	3.913	3.717	3.638	3.247	3.050	2.651
IE	304	260	246	259	286	262	250	199	199	161
EL	1.458	1.277	1.313	1.303	1.296	1.361	1.268	1.244	1.201	1.013
ES	4.123	4.008	4.062	3.551	3.446	3.192	2.985	2.413	2.087	1.917
FR	6.103	5.786	4.622	4.181	4.004	3.554	3.502	3.262	3.232	3.039
IT	5.342	5.402	5.154	4.877	4.575	4.392	4.126	3.765	3.311	3.249
LU	52	50	43	34	30	33	38	27	35	24
NL	743	734	758	568	540	518	517	498	469	
AT	707	680	680	663	573	540	530	509	478	409
PL	4.202	4.448	4.299	4.395	4.175	3.993	4.241	4.099	3.456	2.977
PT	1.306	1.326	1.244	1.028	1.005	779	779	674	666	734
RO	1.871	1.815	1.725	1.841	1.941	1.926	2.060	2.300	2.103	1.802
SI	227	202	188	220	187	220	232	178	132	104
FI	296	301	272	257	283	241	279	265	208	204
SE	433	423	391	364	324	333	344	286	286	266
UK	2.728	2.662	2.738	2.539	2.520	2.492	2.307	1.962	1.740	1.453
EU-19	37.358	36.710	34.932	32.579	31.160	29.428	29.192	26.761	24.229	21.878
Yearly Change	-3,0	-1,7	-2,1	-5,3	-2,9	-5,0	-1,0	-8,8	-10,5	-9,7
EE					126	152	147	97	71	
CY				96						
LV				375	324	309	317	239	166	121
HU			1.008	993	963	1.008	916	757	612	555
MT					13	11	11	6	10	8
SK					462	480	505	495	296	279
EU-25	37.358	36.710	35.940	34.043	33.048	31.388	31.088	28.355	25.384	22.912
CH				395				267	269	244
IS		15	15	16	13	20	13	10	14	4

Figure 17: Annual distribution of fatalities by gender, EU-19 (2001 and 2010)

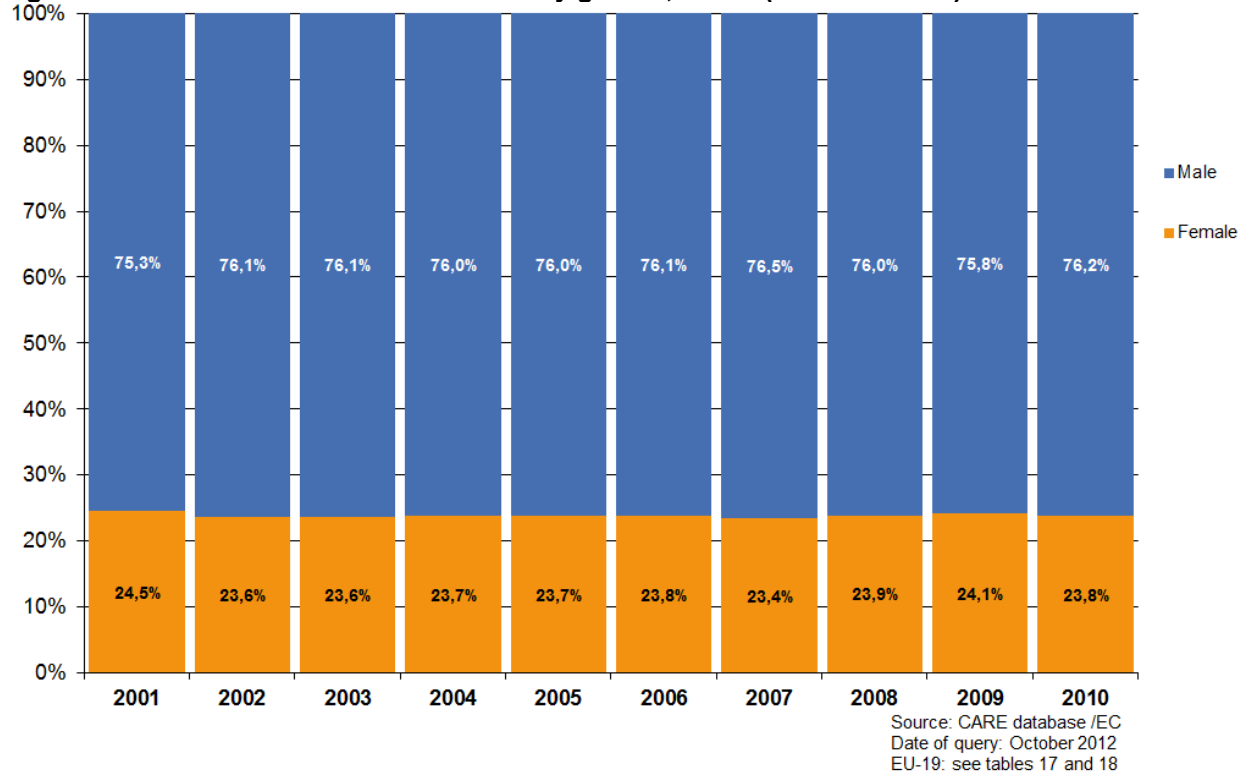


Table 19: Annual number of female fatalities by country, drivers (2001-2010)

	2001	2002	2003	2004	2005	2006	2007	2008	2009	2010
BE	188	155	153	138	136	136	120	105	113	111
CZ	84	89	84	102	69	70	86	74	77	54
DK	56	60	57	55	38	38	56	58	45	43
DE	928	917	864	727	736	664	669	591	530	499
IE	33	35	26	42	45	41	29	36	36	21
EL	65	56	50	65	65	53	64	64	44	60
ES	333	330	337	295	242	253	238	176	190	150
FR	970	842	642	655	586	527	507	451	473	435
IT	663	459	457	410	397	402	352	337	313	304
LU	4	6	4	6	10	3	4	6	3	4
NL	148	142	151	138	132	141	112	113	101	
AT	112	105	115	94	96	96	69	81	63	58
PL	251	266	277	263	250	262	295	299	267	207
PT	70	83	70	56	67	44	46	63	46	46
RO	37	43	45	44	61	60	62	77	81	55
SI	21	21	18	21	26	15	24	13	10	16
FI	63	49	40	44	43	42	46	46	30	31
SE	52	56	63	41	51	52	55	55	55	41
UK	305	299	343	317	288	288	269	260	220	207
EU-19	4.383	4.013	3.796	3.513	3.338	3.187	3.103	2.905	2.697	2.443
Yearly Change	2,9	-8,4	-3,7	-6,7	-3,5	-4,1	-2,7	-7,0	-7,5	-9,7
EE					8	13	11	11	5	
CY				5						
LV				18	16	11	14	15	14	7
HU			69	70	88	94	86	62	59	45
MT								2	2	1
SK					28	30	32	24	16	20
EU-25	4.383	4.013	3.865	3.606	3.478	3.335	3.246	3.019	2.793	2.521
CH				41				32	42	30
IS		2	1	1	3	5	1	2	0	1

Table 20: Annual number of male fatalities by country, drivers (2001-2010)

	2001	2002	2003	2004	2005	2006	2007	2008	2009	2010
BE	866	804	775	765	671	668	711	586	588	484
CZ	612	702	733	675	642	569	666	555	466	440
DK	243	250	243	214	195	162	224	230	153	116
DE	3.904	3.812	3.788	3.271	3.115	2.924	2.848	2.527	2.408	2.085
IE	182	166	166	167	184	160	155	134	125	91
EL	1.064	921	958	951	986	1.021	945	956	919	778
ES	2.864	2.789	2.834	2.552	2.486	2.308	2.180	1.751	1.500	1.360
FR	4.651	4.398	3.586	3.237	3.113	2.799	2.732	2.526	2.566	2.400
IT	3.852	3.821	3.815	3.645	3.483	3.340	3.284	2.962	2.621	2.533
LU	40	35	32	26	24	24	24	21	24	21
NL	600	587	616	458	433	417	406	417	387	
AT	547	519	509	512	448	405	405	399	357	316
PL	2.135	2.275	2.216	2.282	2.216	2.030	2.144	2.070	1.898	1.648
PT	885	865	883	715	693	578	555	496	466	506
RO	737	720	739	764	879	848	937	1.149	974	872
SI	154	142	135	156	139	156	172	133	100	73
FI	219	231	207	181	217	191	217	182	153	159
SE	318	322	297	271	248	253	266	231	207	
UK	1.739	1.751	1.806	1.684	1.714	1.665	1.550	1.333	1.163	1.003
EU-19	25.612	25.110	24.338	22.526	21.886	20.518	20.421	18.658	17.108	15.479
Yearly Change	-2,6	-2,0	-3,1	-7,4	-2,8	-6,3	-0,5	-8,6	-8,3	-9,5
EE					73	87	93	48	44	
CY				73						
LV				169	147	161	162	115	92	64
HU			624	630	607	628	601	480	430	341
MT					5	6	8	6	8	6
SK					259	236	289	258	162	150
EU-25	25.612	25.110	24.962	23.398	22.977	21.636	21.574	19.565	17.844	15.479
CH				302				218	204	181
IS		10	10	12	11	14	12	8	9	3

Table 21: Annual number of female fatalities by country, passengers (2001-2010)

	2001	2002	2003	2004	2005	2006	2007	2008	2009	2010
BE	128	127	88	73	81	60	49	74	66	46
CZ	146	160	149	140	132	94	103	97	74	58
DK	38	40	48	29	28	20	23	24	22	24
DE	598	589	548	485	415	407	350	348	327	308
IE	41	37	31	32	36	34	28	22	22	13
EL	208	193	150	172	197	142	171	141	135	119
ES	706	684	658	589	473	436	364	324	260	225
FR	794	680	538	466	462	403	374	322	356	306
IT	707	674	659	573	532	562	396	370	322	315
LU	10	4	3	4	5	2	1		4	
NL	61	63	72	65	47	47	46	38	42	
AT	90	96	79	65	57	49	56	45	53	33
PL	513	517	549	494	486	469	488	469	384	339
PT	172	156	137	120	103	76	92	95	79	80
RO	217	219	192	245	319	271	278	311	283	227
SI	19	31	24	21	25	17	19	12	19	8
FI	48	43	42	49	37	29	41	17	30	21
SE	68	55	52	49	41	38	46	31	31	30
UK	291	333	301	284	270	286	254	203	191	165
EU-19	4.855	4.701	4.320	3.955	3.746	3.442	3.179	2.943	2.700	2.363
Yearly Change	-1,4	-3,2	-8,1	-8,4	-5,3	-8,1	-7,6	-7,4	-8,3	-12,5
EE					18	12	18	8	11	
CY				14						
LV				60	47	32	34	24	13	9
HU			164	125	127	108	126	85	70	76
MT									3	3
SK					64	44	54	41	40	29
EU-25	4.855	4.701	4.320	3.955	3.746	3.442	3.179	2.943	2.700	2.363
CH				32				27	13	18
IS		11	6	4	2	3	1		2	2

Table 22: Annual number of male fatalities by country, passengers (2001-2010)

	2001	2002	2003	2004	2005	2006	2007	2008	2009	2010
BE	146	89	81	81	88	79	81	72	69	85
CZ	169	171	191	184	145	128	134	112	97	70
DK	44	50	33	28	25	26	34	36	31	28
DE	646	650	599	518	406	383	385	357	296	280
IE	62	39	40	54	51	54	43	34	34	38
EL	199	181	188	187	174	170	172	144	153	122
ES	727	722	730	583	534	484	441	343	289	269
FR	923	869	666	591	522	445	446	428	382	366
IT	834	798	754	671	601	601	463	410	314	324
LU	4	11	7	2	6	4	9	2	5	2
NL	76	92	85	67	55	59	59	53	50	
AT	92	76	96	75	70	70	53	52	59	47
PL	762	772	711	676	722	673	704	711	555	473
PT	205	231	176	170	161	107	117	74	100	110
RO	371	328	309	331	391	374	409	458	443	353
SI	41	33	27	41	30	38	44	16	17	14
FI	41	52	31	52	37	25	28	46	36	26
SE	57	69	62	52	45	43	43	31	31	28
UK	399	386	406	389	365	362	323	257	239	161
EU-19	5.798	5.619	5.192	4.752	4.428	4.125	3.988	3.636	3.200	2.846
Yearly Change	-5,4	-3,1	-7,6	-8,5	-6,8	-6,8	-3,3	-8,8	-12,0	-11,1
EE					18	24	29	22	15	
CY				7						
LV				72	58	50	50	57	29	16
HU			170	144	165	176	131	118	76	85
MT					6	1	1			1
SK					81	90	69	79	53	46
EU-25	5.798	5.619	5.192	4.752	4.428	4.125	3.988	3.636	3.200	2.846
CH				40				21	30	23
IS		5	3	3	2	5		2	4	4

Table 23: Annual number of female fatalities by country, pedestrians (2001-2010)

	2001	2002	2003	2004	2005	2006	2007	2008	2009	2010
BE	68	59	58	39	43	52	46	41	53	46
CZ	108	103	92	84	97	61	86	88	74	65
DK	23	19	17	14	14	29	26	25	24	18
DE	397	383	345	359	294	300	290	290	245	190
IE	29	29	22	28	21	22	28	17	17	12
EL	143	102	89	127	93	95	103	99	71	66
ES	285	248	251	239	243	211	221	176	171	181
FR	293	347	256	227	266	225	237	240	212	212
IT	380	445	292	257	311	312	256	253	291	222
LU	3	2	3	6	2	5	2	2	6	
NL	37	41	39	21	31	24	34	28	32	
AT	49	75	57	56	42	45	36	44	39	52
PL	558	580	498	534	507	501	550	553	458	367
PT	121	108	96	89	63	62	50	51	49	77
RO	325	334	267	314	308	330	400	377	330	293
SI	11	15	12	12	20	10	16	11	10	9
FI	26	22	25	25	16	24	14	16	11	16
SE	29	26	23	26	19	21	25	24	24	19
UK	268	283	276	228	258	232	229	219	186	140
EU-19	3.153	3.221	2.718	2.685	2.648	2.561	2.649	2.554	2.303	2.023
Yearly Change	-5,7	2,2	-15,6	-1,2	-1,4	-3,3	3,4	-3,6	-9,8	-12,2
EE					16	25	16	15	10	
CY				2						
LV				63	55	54	52	38	15	10
HU			85	107	93	91	102	90	78	60
MT					4		1	1	2	1
SK					52	60	70	46	32	43
EU-25	3.153	3.221	2.718	2.685	2.648	2.561	2.649	2.554	2.303	2.023
CH				42				31	25	35
IS		1	1	2	1	3	0	0	1	1

Table 24: Annual number of male fatalities by country, pedestrians (2001-2010)

	2001	2002	2003	2004	2005	2006	2007	2008	2009	2010
BE	90	68	55	62	64	70	57	58	48	58
CZ	214	205	198	197	201	141	146	150	95	97
DK	26	44	32	29	30	31	42	33	28	26
DE	502	490	467	475	392	410	405	363	346	286
IE	60	55	40	38	51	48	52	31	26	32
EL	195	175	167	165	136	170	151	144	129	113
ES	532	497	499	416	426	400	363	319	298	288
FR	530	519	370	354	369	310	324	308	284	273
IT	652	781	579	553	475	446	371	393	376	392
LU	8	4	4	6		5	5	4	6	1
NL	67	55	56	43	52	42	52	28	31	
AT	68	85	75	76	55	65	72	58	62	46
PL	1.305	1.401	1.372	1.437	1.237	1.290	1.393	1.318	1.003	856
PT	217	229	185	144	152	93	106	104	99	118
RO	763	767	677	745	670	704	713	690	685	575
SI	31	26	26	23	17	26	15	28	14	17
FI	36	18	34	24	29	25	34	37	19	
SE	58	32	32	41	31	34	33	21	25	
UK	590	525	526	466	441	465	434	372	338	289
EU-19	5.944	5.976	5.394	5.294	4.828	4.775	4.768	4.459	3.913	3.542
Yearly Change	-2,2	0,5	-9,7	-1,9	-8,8	-1,1	-0,1	-6,5	-12,2	-9,5
EE					33	37	21	26	12	
CY				16						
LV				134	119	98	105	67	45	41
HU			214	219	191	204	184	159	106	129
MT					2	4	2		2	1
SK					122	154	147	158	81	83
EU-25	5.944	5.976	5.608	5.663	5.295	5.272	5.227	4.869	4.159	3.542
CH				53				28	35	40
IS			2	1	0	1	1	0	1	1

4 Fatalities 2009

4.1 People involved

4.1.1 Age and gender of persons

Table 25: Number of total fatalities by age group by country, 2010

	-	0-14	15-17	18-24	25-49	50-64	65+	Total
BE	5	23	21	171	343	124	153	840
CZ		17	17	125	329	142	172	802
DK		9	8	42	81	48	67	255
DE	1	104	101	690	1.218	624	910	3.648
EE								
GR	24	30	39	186	521	190	268	1.258
ES	20	79	49	311	1.087	407	527	2.480
FR		130	161	831	1.513	592	765	3.992
IT	93	69	118	546	1.562	643	1.059	4.090
LV		9	2	35	75	53	44	218
LU				10	13	6	3	32
HU		20	10	73	304	184	149	740
MT		1		4	7	1		13
NL								
AT		10	27	102	178	95	140	552
PL	33	112	122	677	1.419	871	674	3.908
PT		18	7	88	378	168	278	937
RO	5	95	50	307	849	577	494	2.377
SI		2	4	19	54	29	30	138
SK	53	11	7	59	126	67	48	371
FI		7	13	48	93	47	64	272
UK		41	88	351	678	321	371	1.850
EU-22	234	787	844	4.675	10.828	5.189	6.216	28.773
%	0,8%	2,7%	2,9%	16,2%	37,6%	18,0%	21,6%	100,0%
CH		8	12	36	105	65	101	327
IS				3	1	2	2	8

Table 26: Number of female fatalities by age group by country, 2010

	-	0-14	15-17	18-24	25-49	50-64	65+	Total
BE		10	8	33	62	30	60	203
CZ			4	27	48	26	72	177
DK		6	3	8	24	9	35	85
DE		48	33	187	245	156	328	997
EE								
GR	7	12	8	31	73	45	69	245
ES	5	32	13	65	179	82	180	556
FR		41	26	154	252	163	317	953
IT	27	23	28	98	235	139	291	841
LV				4	11	8	3	26
LU				2	4	1	1	8
HU		8	3	15	59	48	48	181
MT		1		2	2			5
NL								
AT		5	9	16	44	20	49	143
PL		50	37	112	231	184	299	913
PT		6	2	19	69	32	75	203
RO	2	41	12	53	155	109	203	575
SI		1	2	3	11	6	11	34
SK	12	3	3	12	19	20	23	92
FI		5	2	7	18	13	23	68
UK		15	22	78	131	82	156	484
EU-22	53	307	215	926	1.872	1.173	2.243	6.789
%	0,8%	4,5%	3,2%	13,6%	27,6%	17,3%	33,0%	100,0%
CH		1	3	7	20	18	34	83
IS				2		1	1	4

Table 27: Number of male fatalities by age group by country, 2010

	-	0-14	15-17	18-24	25-49	50-64	65+	Total
BE		12	13	137	281	93	93	629
CZ			12	98	281	116	100	607
DK		3	5	34	57	39	32	170
DE	1	56	68	503	973	468	582	2.651
EE								
GR	17	18	31	155	448	145	199	1.013
ES	11	47	36	246	904	324	347	1.915
FR		89	135	677	1.261	429	448	3.039
IT	66	46	90	448	1.327	504	768	3.249
LV				20	49	37	15	121
LU				8	9	5	2	24
HU		12	7	58	245	136	97	555
MT				2	5	1		8
NL								
AT		5	18	86	134	75	91	409
PL	17	62	85	564	1.187	687	375	2.977
PT		12	5	69	309	136	203	734
RO	3	54	38	254	694	468	291	1.802
SI		1	2	16	43	23	19	104
SK	41	8	4	47	107	47	25	279
FI		2	11	41	75	34	41	204
UK		26	66	273	547	239	215	1.366
EU-22	156	453	626	3.736	8.936	4.006	3.943	21.856
%	0,7%	2,1%	2,9%	17,1%	40,9%	18,3%	18,0%	100,0%
CH		7	9	29	85	47	67	244
IS				1	1	1	1	4

4.2 Modes of transport

4.2.1 Mode of transport by age of persons

Table 28: Number of pedestrian fatalities by age group by country, 2010

	-	0-14	15-17	18-24	25-49	50-64	65+	Total
BE	1	11	3	12	22	17	40	106
CZ		6	2	10	36	33	81	168
DK		3	1	2	11	8	19	44
DE	1	28	9	40	94	77	227	476
EE								
GR	10	4	1	4	32	28	100	179
ES	9	24	4	21	124	79	210	471
FR		24	11	45	92	68	245	485
IT	12	11	9	26	94	91	371	614
LV		6		3	24	23	23	79
LU						1		1
HU		8		14	48	54	68	192
MT		1				1		2
NL								
AT		3		7	16	20	52	98
PL	26	34	17	81	344	362	372	1.236
PT		4	3	4	44	32	108	195
RO	3	58	14	35	195	258	305	868
SI		1			5	9	11	26
SK	20	4	3	9	29	32	29	126
FI		2		6	6	7	14	35
UK		18	18	53	114	67	135	405
EU-22	82	250	95	372	1.330	1.267	2.410	5.806
%	1,4%	4,3%	1,6%	6,4%	22,9%	21,8%	41,5%	100,0%
CH		4	2	6	11	18	34	75
IS						1	1	2

Table 29: Number of pedal cyclist fatalities by age group by country, 2010

	-	0-14	15-17	18-24	25-49	50-64	65+	Total
BE		3	5	4	10	13	35	70
CZ			3	2	27	26	22	80
DK		1	2	1	1	8	13	26
DE		20	9	12	68	75	197	381
EE								
GR	1	1		4	7	4	6	23
ES	0	1	4	5	25	18	14	67
FR		12	9	11	28	34	53	147
IT	1	7	1	9	54	47	144	263
LV				1	3	4	5	13
LU							1	1
HU		3	1	3	26	27	32	92
MT								
NL								
AT		2			8	6	16	32
PL	3	15	7	13	54	81	107	280
PT				1	8	9	15	33
RO		5	3	9	55	64	46	182
SI			1	2	4	5	5	17
SK	1	1	1	1	7	8	8	27
FI		2			2	10	12	26
UK		7	3	14	38	29	20	111
EU-22	6	80	49	92	425	468	751	1.871
%	0,3%	4,3%	2,6%	4,9%	22,7%	25,0%	40,1%	100,0%
CH		1	2	2	6	8	15	34
IS								

Table 30: Number of moped rider and passenger fatalities by age group by country, 2010

	-	0-14	15-17	18-24	25-49	50-64	65+	Total
BE			6	5	6	3	2	22
CZ			1		2	1	3	7
DK			3		2	3	3	11
DE			12	9	20	15	18	74
EE								
GR	1		5	2	7	6	15	36
ES	1	2	16	21	31	7	20	98
FR		7	75	60	69	22	15	248
IT	7	8	44	37	40	25	42	203
LV				2	1		1	4
HU			1	2	6	7	3	19
NL								
AT			12	2	1	1	2	18
PL		4	20	13	16	18	12	83
PT		1		3	25	23	25	77
RO		2	8	24	41	24	15	114
SI					5	2		7
FI			5		2		2	9
UK			5	1	1	2		9
EU-19	9	24	213	181	275	159	178	1.039
%	0,9%	2,3%	20,5%	17,4%	26,5%	15,3%	17,1%	100,0%
CH		1				1	2	4

Table 31: Number of motorcycle rider and passenger fatalities by age group by country, 2010

	-	0-14	15-17	18-24	25-49	50-64	65+	Total
BE		1		16	71	13	1	102
CZ			4	15	65	7	1	92
DK				4	14	3	1	22
DE		1	27	103	342	123	39	635
EE								
GR	6		17	86	211	24	23	367
ES	1	2	4	20	290	62	7	386
FR		6	10	149	442	106	21	734
IT	8		32	134	606	141	22	943
LV				8	8	1		17
LU					1			1
HU				6	38	5		49
MT					3			3
NL								
AT				7	39	15	7	68
PL		1	16	82	146	9	5	259
PT		1		17	86	14	8	126
RO			1	19	35	1	3	59
SI			1	2	11	3		17
SK	3			7	15	1	1	27
FI			2	5	8	3		18
UK			8	55	228	89	14	394
EU-22	18	12	122	735	2.659	620	153	4.319
%	0,4%	0,3%	2,8%	17,0%	61,6%	14,4%	3,5%	100,0%
CH		1	2	12	40	7	6	68
IS						1		1

Table 32: Number of car driver and passenger fatalities by age group by country, 2010

	-	0-14	15-17	18-24	25-49	50-64	65+	Total
BE	4	5	7	128	183	55	61	443
CZ		10	7	94	167	65	60	403
DK		4	2	30	48	21	30	135
DE		49	39	508	579	272	393	1.840
EE								
GR	5	22	15	89	233	93	88	545
ES	7	44	17	225	489	180	233	1.195
FR		76	53	534	745	308	401	2.117
IT	55	38	31	322	666	285	430	1.827
LV		2	2	18	36	21	12	91
LU				9	11	5	2	27
HU		8	8	47	157	71	39	330
MT		1		4	4			9
NL								
AT		4	12	85	93	40	57	291
PL	3	53	59	464	769	349	156	1.853
PT		10	3	51	158	66	79	367
RO	2	29	23	212	443	175	89	973
SI				8	22	6	8	44
SK	29	6	3	41	62	21	9	171
FI		3	5	37	59	22	33	159
UK		16	50	217	255	106	186	830
EU-22	105	380	336	3.123	5.179	2.161	2.366	13.650
%	0,8%	2,8%	2,5%	22,9%	37,9%	15,8%	17,3%	100,0%
CH		1	5	12	44	27	40	129
IS				3			1	4

4.2.2 Mode of transport by type of area

Figure 18: Fatalities by type of area and mode of transport (EU-23), 2010

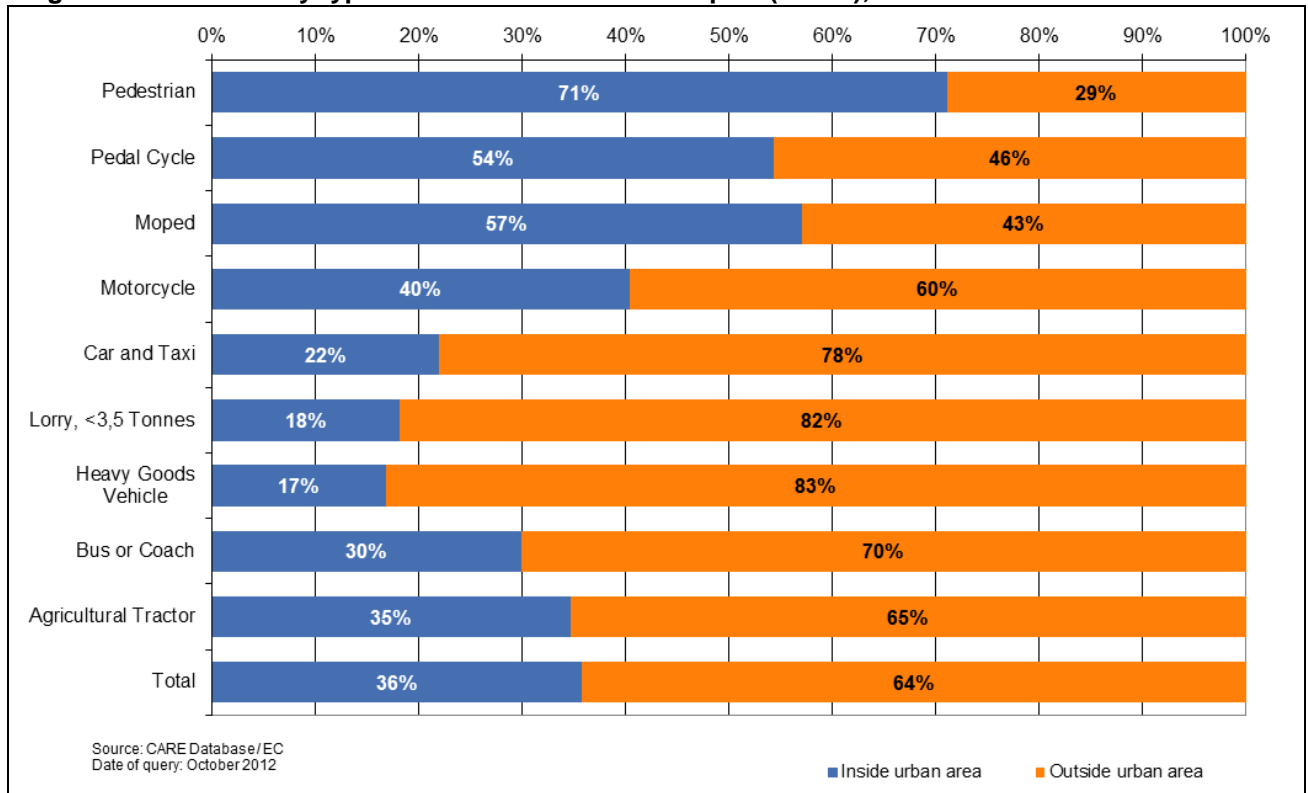


Table 33: Number of fatalities by mode of transport (in which the fatality was travelling) and type of area by country (part 1), 2010

	agricultural tractor		bus or coach		car + taxi		heavy goods vehicle		lorry, under 3.5 tonnes	
	inside urban area	outside urban area	inside urban area	outside urban area	inside urban area	outside urban area	inside urban area	outside urban area	inside urban area	outside urban area
BE		3		1	97	346	1	12	2	33
CZ	2	2	1		91	312	11	16	4	14
DK					19	116		2		14
DE	4	12	5	27	244	1.596	4	83	12	63
EE										
GR	11	12		2	167	378	2	12	8	54
ES	0	18	2	3	85	1.110	2	69	3	113
FR	1	12		4	288	1.829	1	64	19	127
IT	7	18	3	6	487	1.340	30	139		
LV	1	4	5		18	73				
LU		1			2	25		1		
HU			1	11	55	275	1	10	7	17
MT					9					
NL										
AT	3	4		8	36	255	2	5		10
PL	12	11	8	6	572	1.281	43	99		
PT	16	12			120	247	3	9	31	57
RO	2	1	3	7	436	537	5	8	36	37
SI	1				11	33		1		2
SK					33	138	9	10	1	
FI		2			18	141	1	8		9
UK		1	7	7	209	621	1	27	5	29
EU-22	60	113	35	82	2.997	10.653	116	575	128	579
%	34,7%	65,3%	29,9%	70,1%	22,0%	78,0%	16,8%	83,2%	18,1%	81,9%
CH		4	1	3	27	102		2		6
IS					2	2		1		

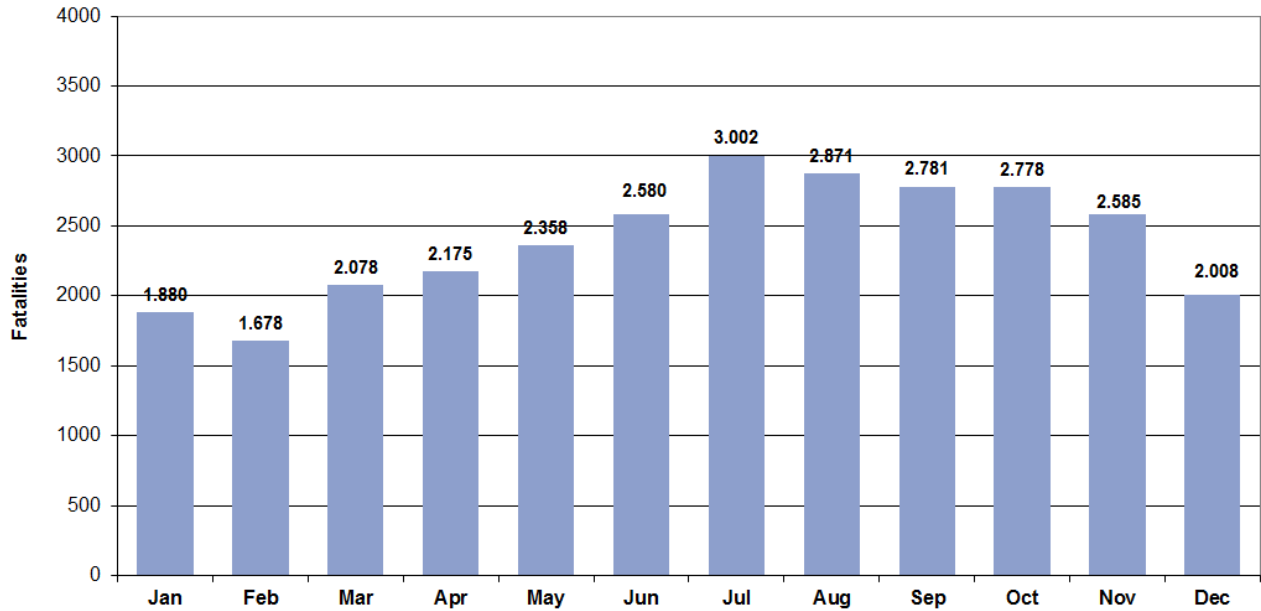
Table 34: Number of fatalities by mode of transport (in which the fatality was travelling) and type of area by country (part 2), 2010

	Moped		motor cycle		Pedal cycle		pedestrian		Total		
	inside urban area	outside urban area	inside urban area	outside urban area	inside urban area	outside urban area	inside urban area	outside urban area	inside urban area	outside urban area	Total
BE	11	11	30	72	25	45	78	28	244	551	795
CZ	3	4	35	57	38	42	106	62	291	509	800
DK	6	5	5	17	19	7	29	15	78	176	254
DE	29	45	141	494	223	158	338	138	1.000	2.616	3.616
EE											
GR	26	10	228	139	10	13	139	40	591	660	1.251
ES	45	54	107	279	18	49	278	193	540	1.888	2.428
FR	123	125	279	455	59	88	346	139	1.116	2.843	3.959
IT	132	71	446	497	154	109	484	130	1.743	2.310	4.053
LV	2	2	7	10	6	7	38	41	77	137	214
LU				1	1			1	3	29	32
HU	9	10	19	30	59	33	120	72	271	458	729
MT			3						12	0	12
NL											
AT	7	11	7	61	16	16	63	35	134	405	539
PL	45	38	159	100	147	133	814	422	1.800	2.090	3.890
PT	48	29	78	48	21	12	165	30	482	444	926
RO	89	25	42	17	125	57	704	164	1.442	853	2.295
SI	5	2	8	9	8	9	18	8	51	64	115
SK			13	14	15	12	86	40	157	214	371
FI	5	4	6	12	14	12	19	16	63	204	267
UK	8	1	133	261	59	52	302	103	724	1.102	1.826
EU-22	593	447	1.746	2.573	1.017	854	4.127	1.677	10.819	17.553	28.372
%	57,0%	43,0%	40,4%	59,6%	54,4%	45,6%	71,1%	28,9%	38,1%	61,9%	
CH	4		14	54	17	17	50	25	113	213	326
IS				1			2		4	4	8

4.3 Accident characteristics

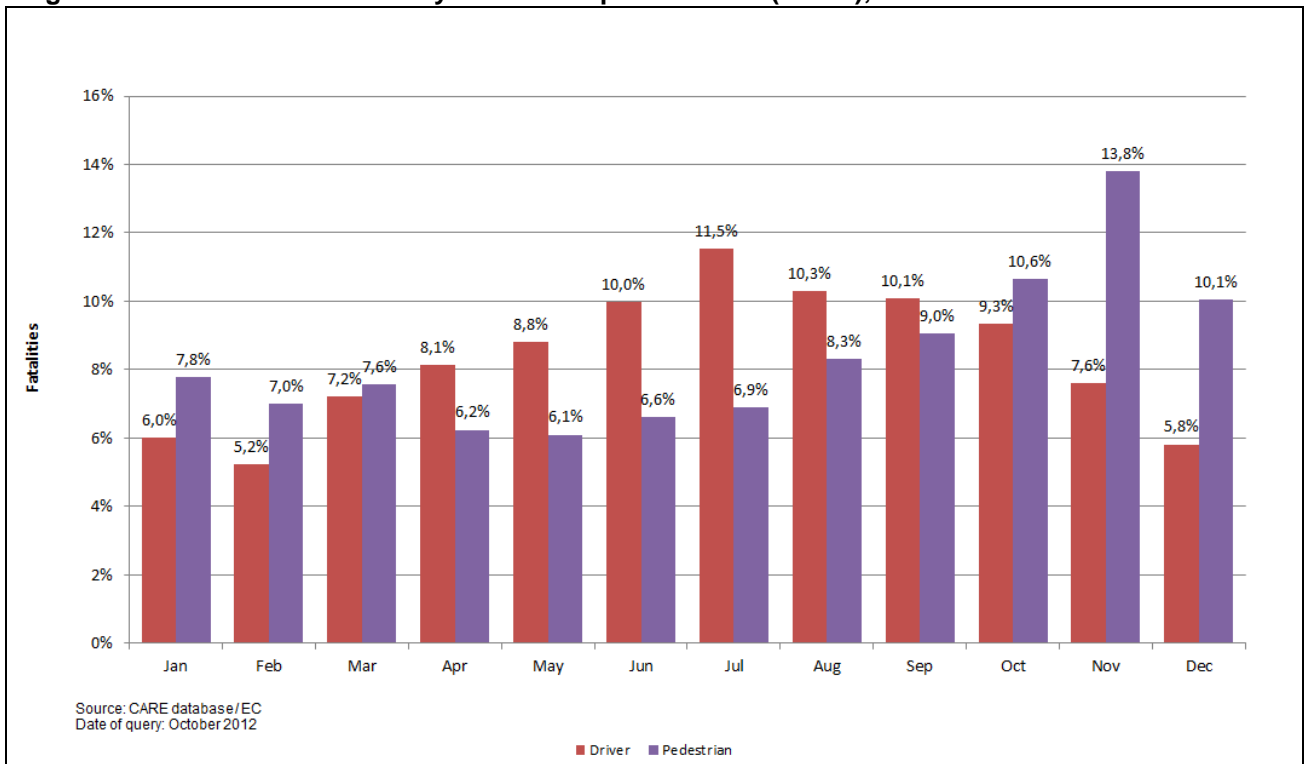
4.3.1 Various periods of time (month, day of week, hour of day)

Figure 19: Number of fatalities by month (EU-22), 2010



Source: CARE database/EC
Date of query: October 2012

Figure 20: Number of fatalities by month and person class (EU-22), 2010



Source: CARE database/EC
Date of query: October 2012

■ Driver ■ Pedestrian

Table 35: Number of fatalities by month by country (January to June), 2010

	January	February	March	April	May	June
BE	57	61	64	83	79	82
CZ	42	30	51	54	58	87
DK	22	12	19	15	20	22
DE	193	184	260	363	312	356
EE						
GR	85	79	103	96	100	108
ES	198	149	175	172	211	202
FR	273	254	300	296	336	329
IT	289	282	314	332	336	407
LV	13	11	7	21	19	24
LU	2	1	2	1	3	3
HU	65	48	45	48	49	75
MT	3	1	1	2		2
NL						
AT	47	25	35	42	50	51
PL	175	160	255	255	292	363
PT	83	63	74	58	69	70
RO	156	135	174	145	188	180
SI	4	3	12	16	14	9
SK	31	27	21	20	21	27
FI	11	20	16	24	24	25
UK	131	133	150	132	177	158
EU-22	1.880	1.678	2.078	2.175	2.358	2.580
%	6,5%	5,8%	7,2%	7,6%	8,2%	9,0%
CH	18	20	28	31	27	40
IS			1	2		1

Table 36: Number of fatalities by month by country (July to December), 2010

	July	August	September	October	November	December	Total
BE	80	72	76	78	69	39	840
CZ	105	73	81	91	90	40	802
DK	38	23	21	17	27	19	255
DE	431	300	375	339	354	181	3.648
EE							
GR	105	149	117	123	88	105	1.258
ES	250	257	221	242	207	197	2.481
FR	453	383	357	377	339	295	3.992
IT	450	372	343	328	292	345	4.090
LV	20	25	20	14	28	16	218
LU	3	3	5	1	4	4	32
HU	63	70	83	80	50	64	740
MT	2	1			1		13
NL							
AT	65	56	49	52	43	37	552
PL	389	470	470	450	456	173	3.908
PT	99	102	73	79	76	91	937
RO	208	243	247	252	222	227	2.377
SI	23	9	13	14	14	7	138
SK	39	40	32	42	47	24	371
FI	39	26	23	21	19	24	272
UK	140	197	175	178	159	120	1.850
EU-22	3.002	2.871	2.781	2.778	2.585	2.008	28.774
%	10,4%	10,0%	9,7%	9,7%	9,0%	7,0%	100,0%
CH	28	24	20	34	25	32	327
IS		1			1	2	8

Table 37: Number of driver fatalities by month by country (January to June), 2010

	January	February	March	April	May	June
BE	39	44	48	63	48	59
CZ	26	14	27	37	41	61
DK	13	5	14	11	15	18
DE	126	108	196	264	231	276
EE	9	4	6	10	17	8
GR						
ES	122	76	103	103	138	133
FR	188	162	205	216	239	253
IT	179	187	215	235	253	308
LV	4	3	1	9	10	12
LU	2		2		2	3
HU	26	25	26	28	28	35
MT	1		1	2		1
NL						
AT	27	12	24	30	36	37
PL	72	61	111	146	159	199
PT	43	34	48	38	41	41
RO	51	43	66	63	79	99
SI	3	1	6	11	10	7
SK	11	9	8	10	8	17
FI	6	14	10	18	19	20
UK	71	83	106	84	120	102
EU-22	1.019	885	1.223	1.378	1.494	1.689
%	6,0%	5,2%	7,2%	8,1%	8,8%	10,0%
CH	10	9	18	26	19	28
IS			1			1

Table 38: Number of driver fatalities by month by country (June to December), 2010

	July	August	September	October	November	December	Total
BE	61	56	57	53	42	26	596
CZ	72	55	48	61	34	19	495
DK	16	20	16	8	14	9	159
DE	320	218	285	234	210	116	2.584
EE	8	14	6	20	9	2	113
GR							
ES	154	156	142	141	133	112	1.513
FR	355	285	255	264	223	190	2.835
IT	340	273	256	230	165	196	2.837
LV	11	14	10	4	6	7	91
LU	3	2	3	1	4	3	25
HU	38	35	48	49	24	25	387
MT	1	1					7
NL							
AT	53	43	40	34	21	17	374
PL	210	246	235	203	163	54	1.859
PT	68	62	47	43	41	46	552
RO	91	87	113	91	75	69	927
SI	14	7	9	7	8	6	89
SK	23	21	16	17	19	11	170
FI	24	18	15	16	14	16	190
UK	94	132	109	105	81	61	1.148
EU-22	1.956	1.745	1.710	1.581	1.286	985	16.951
%	11,5%	10,3%	10,1%	9,3%	7,6%	5,8%	100,0%
CH	20	17	17	19	12	16	211
IS		1				1	4

Table 39: Number of passenger fatalities by month by country (January to June), 2010

	January	February	March	April	May	June
BE	14	8	8	12	20	14
CZ	4	11	11	9	9	10
DK	7	2	3	4	4	1
DE	28	34	31	56	53	57
EE						
GR	23	13	19	15	18	17
ES	35	28	32	42	40	31
FR	42	48	59	52	72	41
IT	48	47	51	49	47	55
LV	3	2	1	4	6	7
LU		1			1	
HU	20	11	6	5	12	27
MT	1	1				1
NL						
AT	9	11	5	4	8	6
PL	48	33	48	58	58	88
PT	16	17	10	10	17	12
RO	42	50	43	28	50	40
SI		1	1	3	2	1
SK	6	6	5	5	5	4
FI	3	3	4	3	2	2
UK	24	18	19	21	28	25
EU-22	373	345	356	380	452	439
%	7,1%	6,5%	6,7%	7,2%	8,6%	8,3%
CH	2	3	4	1	4	7
IS				2		

Table 40: Number of passenger fatalities by month by country (July to December), 2010

	July	August	September	October	November	December	Total
BE	10	8	11	13	10	8	136
CZ	24	10	15	13	17	6	139
DK	14	2	2	3	3	7	52
DE	81	48	61	51	63	25	588
EE							
GR	20	30	26	26	14	20	241
ES	61	58	47	56	26	39	495
FR	60	65	54	66	54	59	672
IT	66	61	53	50	64	48	639
LV	6	7	5	2	2	3	48
LU		1	2			1	6
HU	14	18	11	14	9	14	161
MT					1		4
NL							
AT	6	8	4	6	9	4	80
PL	97	100	80	96	79	28	813
PT	20	27	11	22	12	16	190
RO	49	59	57	58	38	66	580
SI	7	2	2	2	1		22
SK	8	8	2	14	10	2	75
FI	12	7	4		2	5	47
UK	23	34	25	30	28	22	297
EU-22	578	553	472	522	442	373	5,285
%	10,9%	10,5%	8,9%	9,9%	8,4%	7,1%	100,0%
CH	3	2	1	6	2	6	41
IS	4	7	4	5		1	23

Table 41: of pedestrian fatalities by month by country (January to June), 2010

	January	February	March	April	May	June
BE	4	9	8	8	11	9
CZ	12	5	13	8	8	16
DK	2	5	2		1	3
DE	39	42	33	43	28	23
EE						
GR	16	19	19	16	8	15
ES	41	46	40	27	33	38
FR	43	44	36	28	25	35
IT	62	48	48	48	36	44
LV	6	6	5	8	3	5
LU				1		
HU	19	12	13	15	9	13
MT	1					
NL						
AT	11	2	6	8	6	8
PL	55	66	96	51	75	76
PT	24	12	16	10	11	17
RO	63	42	65	54	59	41
SI	1	1	5	2	1	1
SK	14	12	8	5	8	6
FI	2	3	2	3	3	3
UK	36	32	25	27	29	31
EU-22	451	406	440	362	354	384
%	7,8%	7,0%	7,6%	6,2%	6,1%	6,6%
CH	6	8	6	4	4	5
IS						

Table 42: of pedestrian fatalities by month by country (July to December), 2010

	July	August	September	October	November	December	Total
BE	8	8	8	11	17	5	106
CZ	9	8	18	17	39	15	168
DK	8	1	3	6	10	3	44
DE	30	34	29	54	81	40	476
EE							
GR	11	15	12	21	10	17	179
ES	34	43	32	45	48	46	473
FR	38	33	48	47	62	46	485
IT	44	38	34	48	63	101	614
LV	3	4	5	8	20	6	79
LU							1
HU	11	17	24	17	17	25	192
MT	1						2
NL							
AT	6	5	5	12	13	16	98
PL	82	124	155	151	214	91	1,236
PT	11	13	15	14	23	29	195
RO	68	97	76	103	108	92	868
SI	2		2	5	5	1	26
SK	8	11	14	11	18	11	126
FI	3	1	4	5	3	3	35
UK	23	31	41	43	50	37	405
EU-22	400	483	525	618	801	584	5,808
%	6,9%	8,3%	9,0%	10,6%	13,8%	10,1%	100,0%
CH	5	5	2	9	11	10	75
IS					1	1	2

Figure 21: Total number of fatalities by day of week and person class (EU-23), 2010

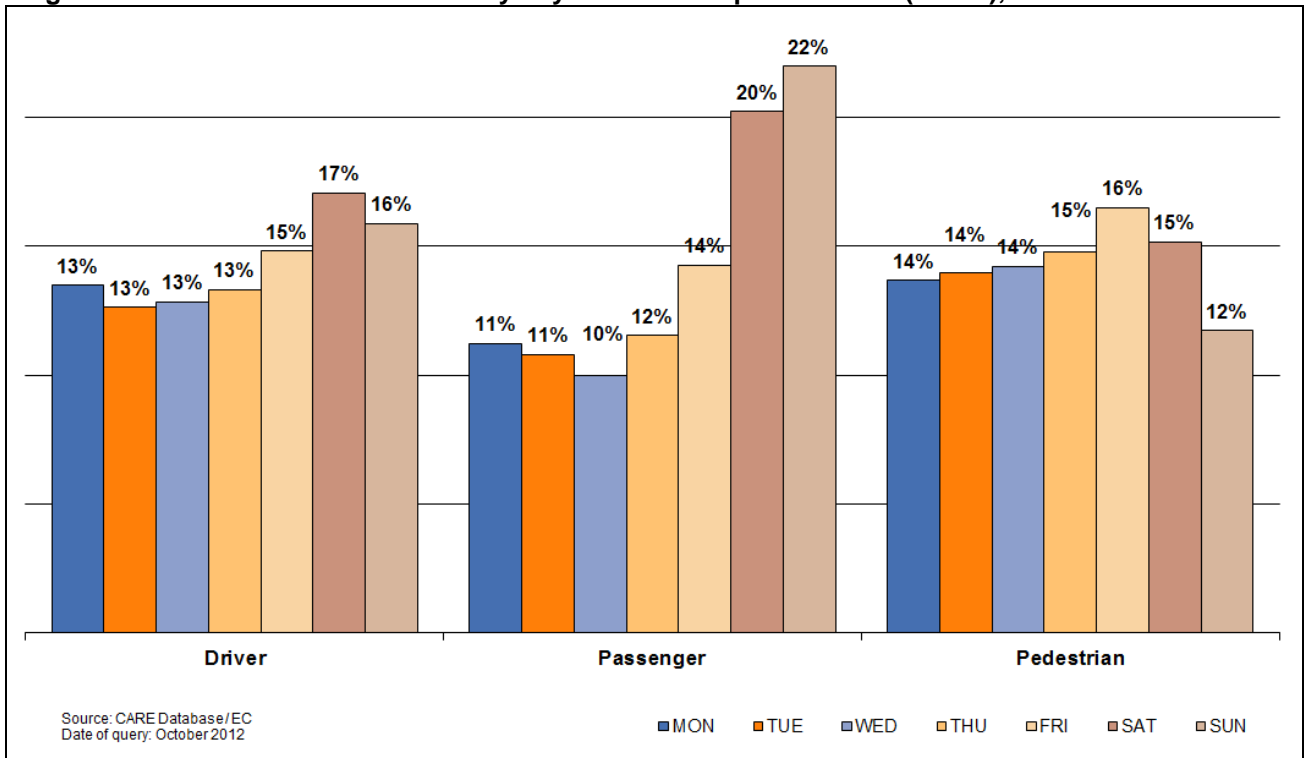


Table 43: Total number of fatalities by day of week by country, 2010

	Monday	Tuesday	Wednesday	Thursday	Friday	Saturday	Sunday	Total
BE	86	102	117	115	124	144	152	840
CZ	110	112	112	101	122	131	114	802
DK	35	32	33	32	41	48	34	255
DE								3.648
EE								
GR	168	161	162	162	187	198	220	1.258
ES	317	297	309	333	375	429	420	2.480
FR	486	507	487	528	671	657	656	3.992
IT	553	505	531	506	604	702	689	4.090
LV	26	37	33	28	27	39	28	218
LU	4	1	6	5	7	5	4	32
HU	111	92	93	98	134	120	92	740
MT	1	1	2		1	2	6	13
NL								
AT	83	68	76	72	90	70	93	552
PL	571	551	503	516	572	623	572	3.908
PT	120	130	106	115	129	170	167	937
RO	308	301	296	312	382	365	413	2.377
SI	12	12	18	21	32	27	16	138
SK	48	52	47	51	54	64	55	371
FI	39	39	37	38	35	59	25	272
UK	233	239	224	219	278	321	336	1.850
EU-22	3.311	3.239	3.192	3.252	3.865	4.174	4.092	28.773
%	11,5%	11,3%	11,1%	11,3%	13,4%	14,5%	14,2%	100,0%
CH	40	47	55	48	38	51	48	327
IS	2					6		8

Table 44: Number of fatalities by day of week by country, 2010 (drivers)

	Monday	Tuesday	Wednesday	Thursday	Friday	Saturday	Sunday	Total
BE	63	74	88	88	83	96	104	596
CZ	66	63	70	64	80	88	64	495
DK	22	21	23	22	25	27	19	159
DE								2.548
EE								
GR	107	100	113	113	123	130	152	838
ES	190	192	184	193	235	273	245	1.512
FR	358	360	348	379	499	455	436	2.835
IT	381	345	378	354	418	493	468	2.837
LV	13	13	18	7	10	15	15	91
LU	4	1	4	5	4	4	3	25
HU	62	48	54	48	72	54	49	387
MT	1	1	1		1	1	2	7
NL								
AT	56	48	51	54	67	43	55	374
PL	285	263	241	252	259	300	259	1.859
PT	65	69	57	77	77	105	102	552
RO	112	122	111	113	161	139	169	927
SI	7	8	9	12	22	18	13	89
SK	17	30	27	25	19	27	25	170
FI	29	30	25	29	28	35	14	190
UK	147	155	139	129	167	198	213	1.148
EU-22	1.985	1.943	1.941	1.964	2.350	2.501	2.407	17.639
%	11,3%	11,0%	11,0%	11,1%	13,3%	14,2%	13,6%	100,0%
CH	26	34	35	31	25	31	29	211
IS	2					2		4

Table 45: Number of fatalities by day of week by country 2010 (passengers)

	Monday	Tuesday	Wednesday	Thursday	Friday	Saturday	Sunday	Total
BE	13	11	14	12	21	33	32	136
CZ	21	20	19	17	21	16	25	139
DK	4	7	3	4	10	17	7	52
DE								
EE	3	9	6	7	1	10	19	55
GR	42	31	25	22	32	40	49	241
ES	62	46	65	56	57	99	111	496
FR	65	63	71	75	98	144	156	672
IT	85	72	65	66	75	120	156	639
LV	5	8	6	6	5	13	5	48
LU			1		3	1	1	6
HU	27	13	19	23	30	32	17	161
MT						1	3	4
NL								
AT	9	5	5	7	13	17	24	80
PL	124	113	94	86	107	145	144	813
PT	29	24	18	11	26	39	43	190
RO	79	61	66	72	86	99	117	580
SI	3	2	2	3	6	5	1	22
SK	10	6	5	11	13	15	15	75
FI	6	5	8	6	3	13	6	47
UK	33	32	34	33	46	56	63	297
EU-22	620	528	526	517	653	915	994	4.753
%	13,0%	11,1%	11,1%	10,9%	13,7%	19,3%	20,9%	100,0%
CH	4	7	7	4	4	9	6	41
IS						2		2

Table 46: Number of fatalities by day of week by country, 2010 (pedestrians)

	Monday	Tuesday	Wednesday	Thursday	Friday	Saturday	Sunday	Total
BE	10	17	14	15	19	15	16	106
CZ	23	29	23	20	21	27	25	168
DK	9	4	7	6	6	4	8	44
DE								
EE	2	5	3	4	11	8	11	44
GR	19	30	24	27	32	28	19	179
ES	66	60	60	83	83	57	64	473
FR	63	84	68	74	74	58	64	485
IT	87	88	88	86	111	89	65	614
LV	8	16	9	15	12	11	8	79
LU			1					1
HU	22	31	20	27	32	34	26	192
MT								
NL			1				1	2
AT	18	15	20	11	10	10	14	98
PL	162	175	168	178	206	178	169	1.236
PT	26	37	31	27	26	26	22	195
RO	116	118	119	127	135	127	126	868
SI	2	2	7	5	4	4	2	26
SK	21	16	15	15	22	22	15	126
FI	4	4	4	3	4	11	5	35
UK	53	52	51	57	65	67	60	405
EU-22	711	783	733	780	873	776	720	5.376
%	13,2%	14,6%	13,6%	14,5%	16,2%	14,4%	13,4%	100,0%
CH	10	6	13	13	9	11	13	75
IS						2		2

Table 47: Number of fatalities by hour of day by country (00-08), 2010

	00	01	02	03	04	05	06	07	08
BE	27	31	39	25	38	38	29	41	29
CZ	27	12	12	7	25	40	32	43	32
DK	8	8	12	7	5	6	6	8	11
DE									
EE									
GR	39	47	47	25	40	40	66	50	53
ES	50	53	40	51	56	65	90	105	116
FR	128	100	109	85	105	116	136	184	184
IT	85	160	102	93	101	90	108	116	168
LV	8	1	2	2	1	7	3	10	7
LU	0	0	4	0	1	1	0	2	2
HU	15	28	11	12	22	32	39	34	23
MT	0	0	0	2	2	0	1	1	0
NL									
AT	7	11	6	13	14	24	27	15	20
PL	88	92	88	66	81	137	162	152	147
PT	32	14	19	14	25	29	20	41	37
RO	68	59	41	51	42	54	92	100	78
SI	6	2	5	2	2	5	4	6	8
SK	7	4	7	8	13	10	24	11	16
FI	8	8	6	5	7	4	7	12	20
UK	59	60	49	35	24	43	47	76	72
EU-21	662	690	599	503	604	741	893	1.007	1.023
%	2,3%	2,4%	2,1%	1,7%	2,1%	2,6%	3,1%	3,5%	3,6%

Table 48: Number of fatalities by hour of day by country (09-16), 2010

	09	10	11	12	13	14	15	16
BE	26	37	26	28	32	34	41	53
CZ	31	43	39	40	39	60	41	44
DK	8	6	15	6	19	13	21	22
DE								
EE								
GR	47	43	50	55	46	56	54	71
ES	135	111	110	139	132	113	122	117
FR	151	153	142	148	165	181	194	252
IT	174	204	196	225	171	168	230	237
LV	4	6	8	11	13	8	14	9
LU	0	3	0	1	0	2	0	0
HU	35	32	37	36	31	28	27	51
MT	1	0	1	1	0	0	0	0
NL								
AT	25	19	27	29	37	37	35	37
PL	125	135	138	164	162	187	176	233
PT	38	33	35	43	46	31	75	61
RO	88	87	102	97	105	103	109	114
SI	9	5	5	4	8	6	8	16
SK	16	6	20	14	16	21	17	22
FI	15	12	11	14	17	15	12	14
UK	69	90	90	80	103	90	118	131
EU-21	997	1.025	1.052	1.135	1.142	1.153	1.294	1.484
%	3,5%	3,6%	3,7%	3,9%	4,0%	4,0%	4,5%	5,2%

Table 49: Number of fatalities by hour of day by country (17-24), 2010

	17	18	19	20	21	22	23	unknown	Total
BE	55	33	33	36	36	33	40		840
CZ	47	47	37	31	24	27	13	9	802
DK	18	5	13	9	6	16	7		255
DE								3.648	3.648
EE									
GR	80	65	65	63	49	56	51		1.258
ES	145	136	141	146	120	101	86		2.479
FR	299	292	228	203	155	157	125		3.992
IT	274	294	260	199	153	116	144	22	4.090
LV	20	19	19	18	11	10	7		218
LU	0	3	2	3	4	3	0	1	32
HU	66	42	36	25	37	25	16		740
MT	0	0	1	0	1	1	1	0	13
NL									
AT	45	33	19	12	15	25	20		552
PL	256	255	276	243	209	201	135		3.908
PT	50	82	66	49	47	24	26		937
RO	172	157	160	146	141	110	101		2.377
SI	8	7	8	6	3	4	1		138
SK	27	32	22	19	13	9	13	4	371
FI	14	25	14	5	8	10	9		272
UK	127	89	88	82	83	74	71	0	1.850
EU-21	1.703	1.616	1.488	1.295	1.115	1.002	866	3.684	28.772
%	5,9%	5,6%	5,2%	4,5%	3,9%	3,5%	3,0%	12,8%	100,0%

Figure 22: Number of fatalities by hour of day (EU-21), 2001 and 2010

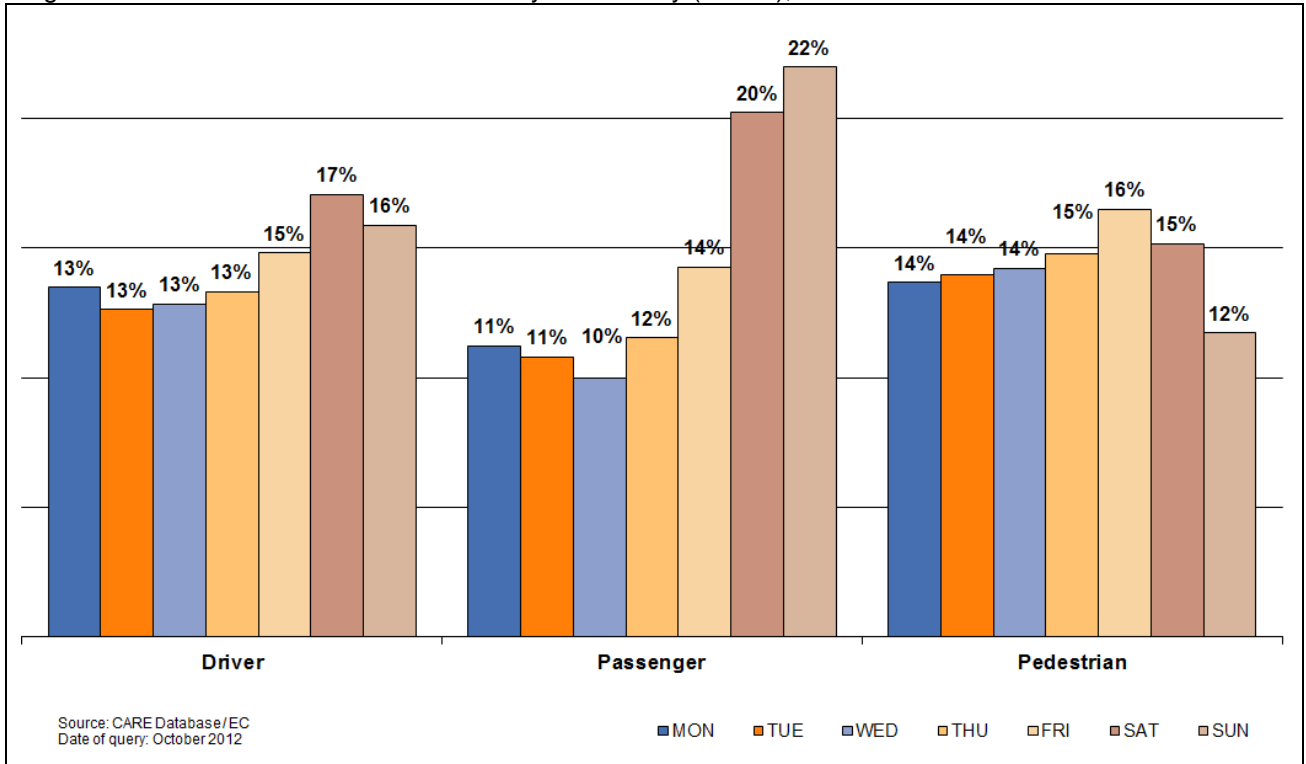


Figure 23: Distribution of fatalities by hour of day and person class (EU-21), 2010

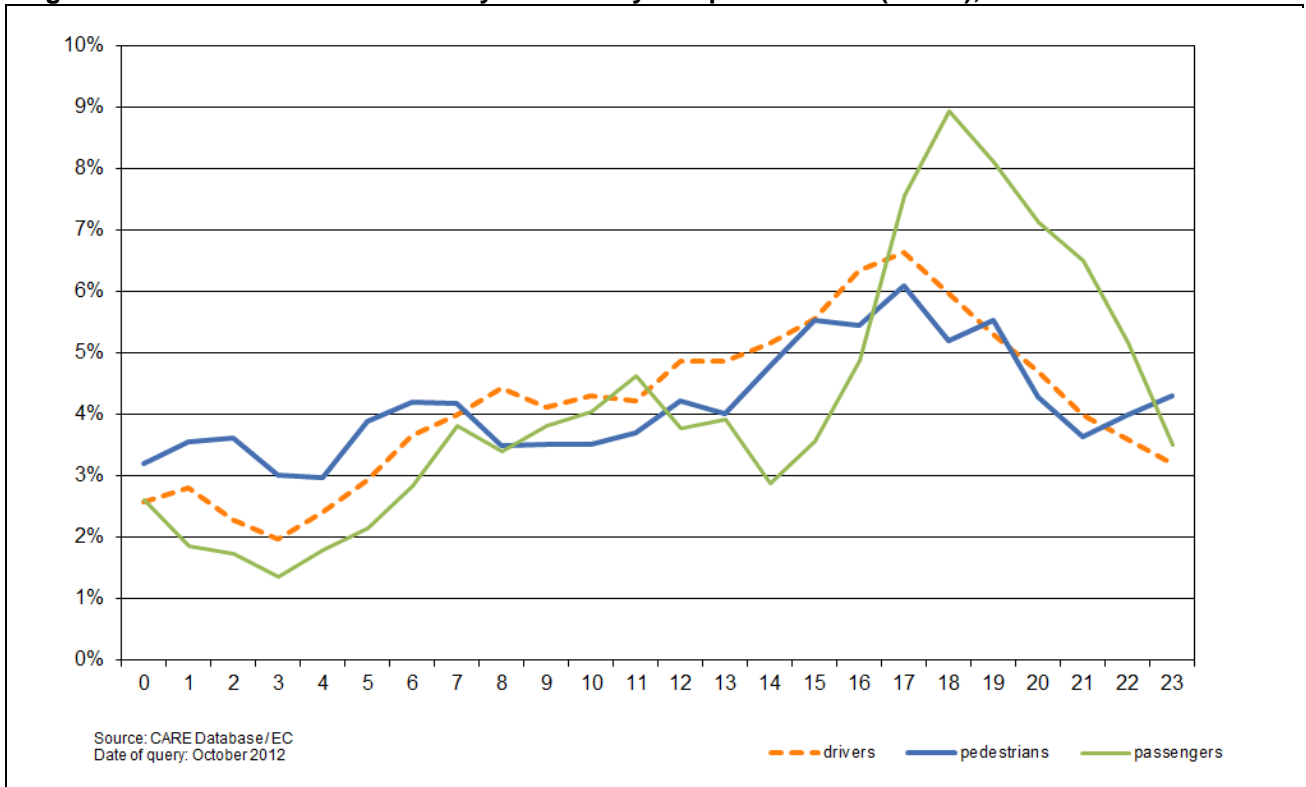
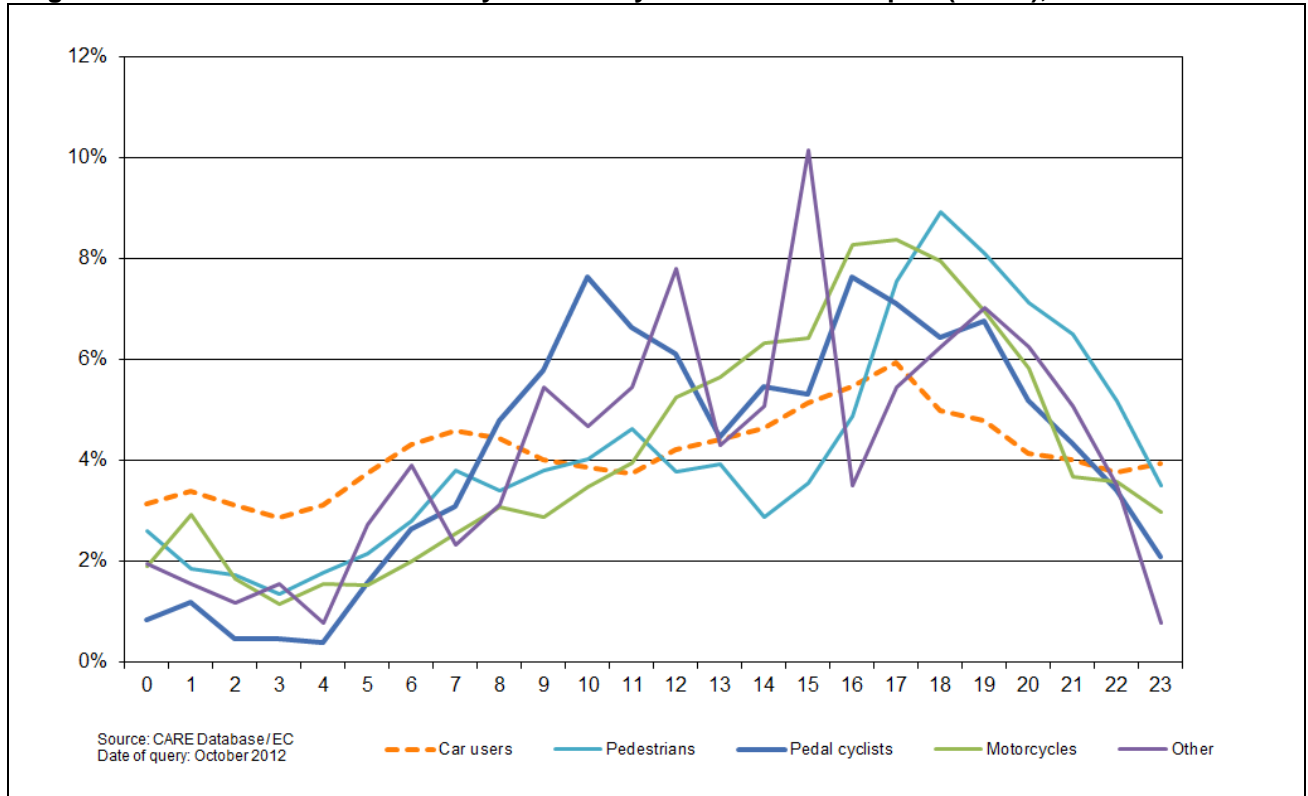


Figure 24: Distribution of fatalities by hour of day and mode of transport (EU-21), 2010



4.3.2 Type of area/road

Figure 25: Number of fatalities by type of area by country, 2010

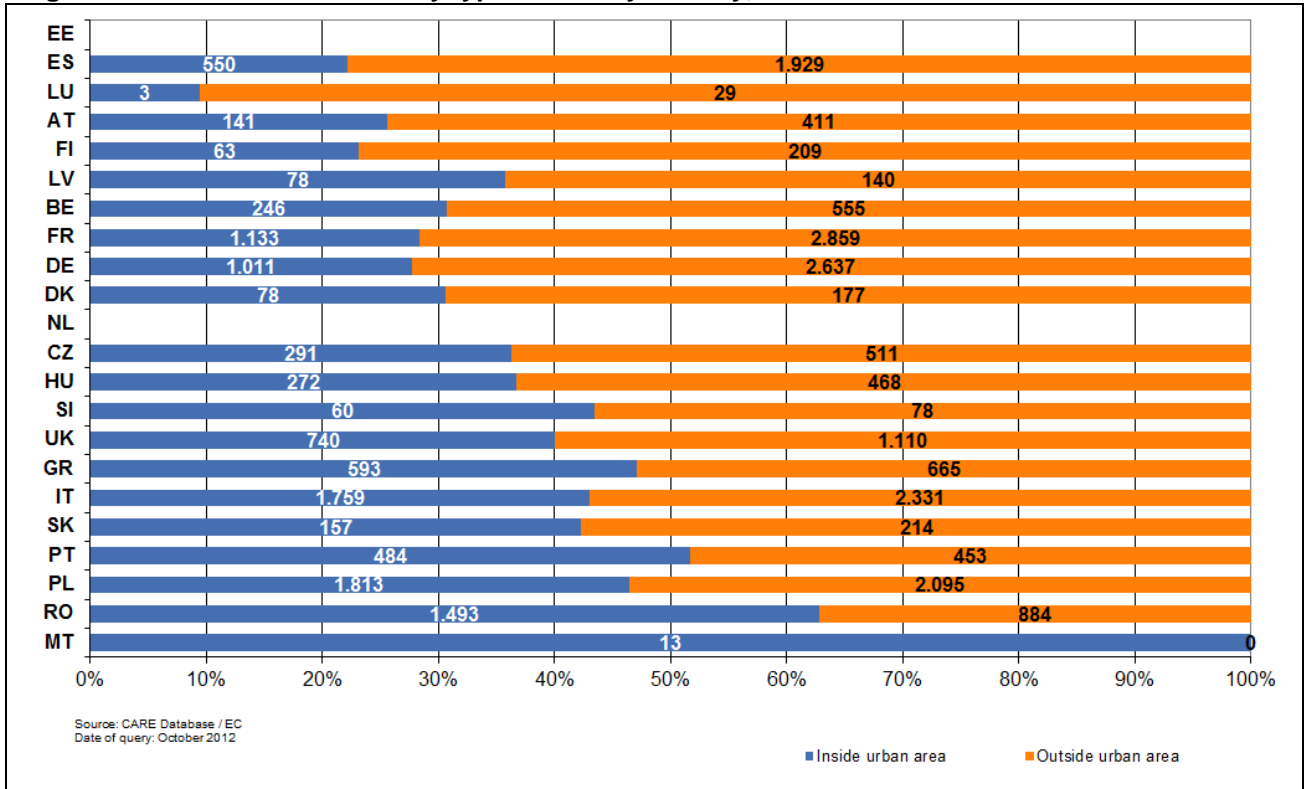


Table 50: Number of fatalities by type of area and road by country, 2010

	inside urban area	outside urban area			Total
		motorway	no motorway	unknown	Total
BE	246	106	449		801
CZ	291	28	483		802
DK	78	26	151		255
DE	1.011	430	2.207		3.648
EE	0				
GR	34	87	147	431	699
ES	550	413	1.516		2.479
FR	1.132	238	2.618	3	3.991
IT	1.759	376	1.955		4.090
LV	78		140		218
LU	3	29			32
HU	272	44	424		740
MT	13				13
NL	0				
AT	141	59	352		552
PL	1.262	28	1.913	154	3.357
PT	482	111	339	3	935
RO	1.493	18	866		2.377
SI	60	19	59		138
SK	157	14	200		371
FI	63	4	205		272
UK	536	117	926	67	1.646
EU-22	9.661	2.147	14.950	658	27.416
%	35,2%	7,8%	54,5%	2,4%	100,0%
CH	114	23	190		327
IS	4		4		8

4.3.3 Type of junction

Table 51: Number of fatalities by type of junction by country, 2009*

	not at a junction	Junction Type						Total
		crossroad	level crossing	other junction	roundabout	t or y junction	unknown	
BE	780		0	161	3			944
CZ	724	77	23	4	4	69		901
DK	210	32	3	55	2	1	0	303
DE	1.491	898	55	118			1.590	4.152
EE	73	6	4	2	2	7	4	98
GR	1.329						127	1.456
ES	2.230	185		57	67	175		2.714
FR	3.697	263	25	76	46	166		4.273
IT	3.019	551	4	564	99			4.237
LV	41	2	0	3		1	1	48
LU	653	140	21	6	2			822
HU							15	15
MT	423	197	12	0	12			644
NL	494	93	14	0	1	31		633
AT	3.833	688	45		6			4.572
PL	691	48	6	6	10	67	13	840
PT	2.541	220	35					2.796
RO	157	8	4		0		2	171
SI	337	14		0	0	21	12	384
SK	228			51				279
FI	293			62	3			358
UK	1.521	125	0	143	62	486	0	2.337
EU-22	24.765	3.547	251	1.308	320	1.024	1.764	32.977
%	75,1%	10,8%	0,8%	4,0%	1,0%	3,1%	5,3%	100,0%
CH	137	34	178		178			527
IS	5		12		12			29

*Data for 2010 not available for junction type

4.3.4 Weather conditions

Figure 26: Number of fatalities by weather conditions (EU-23), 2010

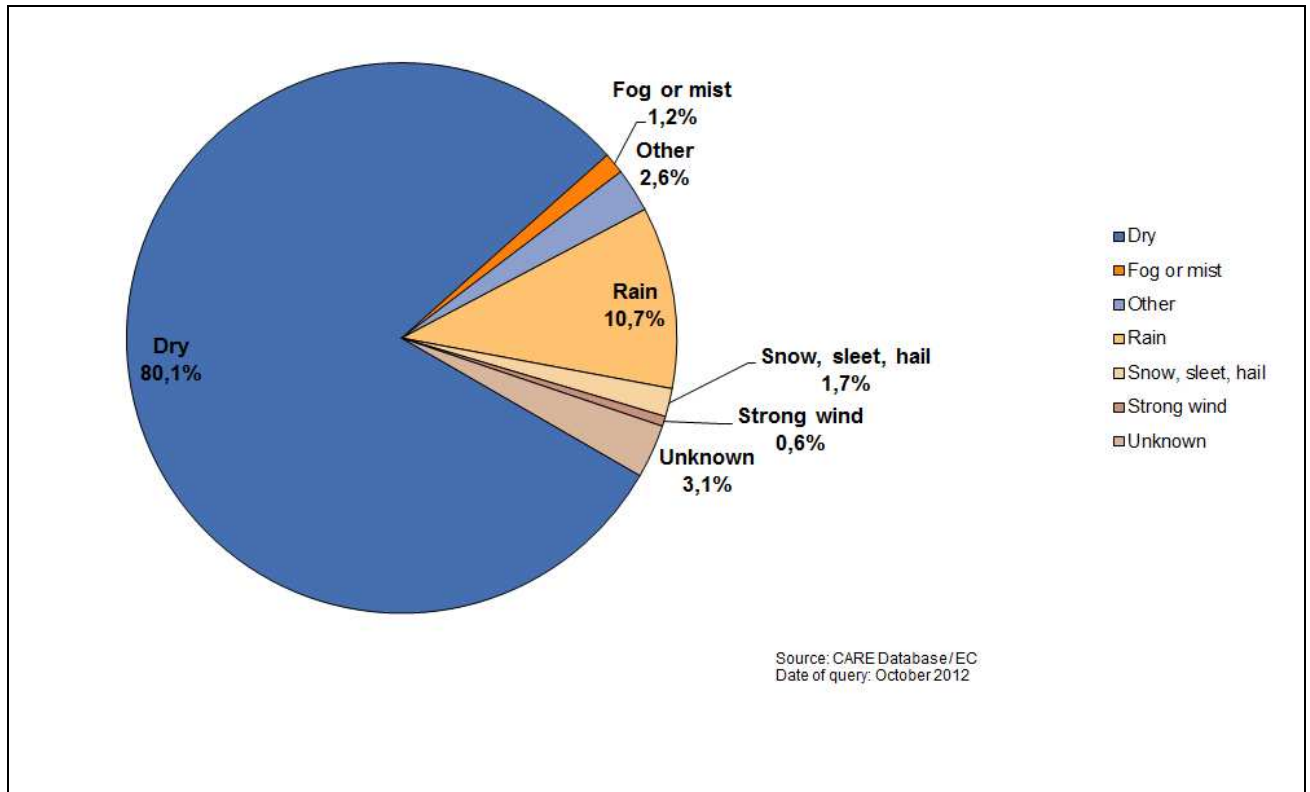


Table 52: Number of fatalities by weather conditions by country, 2010

	dry	fog or mist	Other	rain	snow, sleet, hail	strong wind	unknown	Total
BE	662	10	2	87	17		62	840
CZ	647	14	8	87	20	1		777
DK	213	1		26	9	2	4	255
DE	2.516	14		119	238	10	751	3.648
EE							6	6
GR	1.080	6	15	145	4	8		1.258
ES	2.078	23	70	270	3	23		2.467
FR	3.319	36	74	442	94	27		3.992
IT	2.969	47	519	519	31	5		4.090
LV	172	7			22	17		218
LU	14	1		4	5		8	32
HU	618	17		84		4		723
MT	9					1	3	13
NL								
AT	459	7		61	22	3		552
PL	3.152	79		500		39		3.770
PT	725	17		183	2		10	937
RO	1.982	35		251		5		2.273
SI	111	5		18	3		1	138
SK	291	5	8	47		1	3	355
FI	213	8		12	1		19	253
UK	1.534	20	40	183	1	19	27	1.824
EU-22	22.764	352	736	3.038	472	165	894	28.421
%	80,1%	1,2%	2,6%	10,7%	1,7%	0,6%	3,1%	100,0%
CH	280	3	2	28	6	1		320
IS	8							8

5 Glossary

The CARE glossary provides short definitions for variables used in the Annual Statistical Report, and includes short definitions of CARE common values.

The glossary has two components:

- a) A **definition** of the common value
- b) The **availability** of the common value in the data file for each Member State.

ACCIDENT

ACCIDENT

Definition: Occurs on a public road. Occurs on a private road to which the public has right of access (except BE, NL, PT). Involves at least one moving vehicle (except UK, PT). Involves at least one injured or killed person. Is reported by the police. Self reporting possible (BE, UK, EL, IT, IE). Self reporting not possible (DK, FI, NL, AT, PT). Confirmed suicides excluded (BE, UK, IE, NL, AT, DK, PT). Confirmed suicides included (ES, IT, LU).

Note: The variation in the groups of road and the coverage of the injury categories included in injury accidents, together with differences in the level of self reported accidents, will lead to significant variations in the number of injury accidents reported, and their reporting rate, between Member States.

FATAL ACCIDENT

Definition: Accident with at least one killed person regardless the injury severity of any other involved persons.

Note: See "killed" definition from Injury Severity defined in Person type item (Death within 30 days of a road accident [UN/ECE Geneva 1995 – Statistics of Road Traffic Accidents in Europe and North America], except AT [3 days before 1992], ES [24 hours in CARE; 24 hours before 1993 in publication], FR [6 days], GR [24 hours], IT [7 days], PT [24 hours]. Suicide not included [except DK, ES, FR]. Natural death not included [except LU, SE]).

Data availability: All countries

TIME TYPE ITEMS

MONTH

Definition: Calendar month

Data availability: All countries (except DK)

HOUR

Definition: Period of 60 minutes. Rounded down to whole hours (except EL, ES, IT: rounded to nearest hour).

Note: Winter time is:

- GMT from November to March (DE from 1996 onwards, GB, IE, NI, PT)
- GMT +1 hour from October to March (BE, AT, DK prior to 1996, DK, ES, FR, IT, LU, NL, SE)
- GMT +2 hours from October to March (EL, FI).

Summer time is one hour ahead of winter time:

- GMT +1 hour from April to October (DK from 1996 onwards, GB, IE, NI, PT)
- GMT +2 hours from April to September (AT, BE, DK prior to 1996, DK, ES, FR, IT, LU, NL, SE)
- GMT +3 hours from April to September (EL, FI)

For PT, unknown hour coded as '12' during daytime and '0' during night time

Data availability: All countries (except DK)

DAY OF WEEK

Definition: 24 hour day within 7 day week.

Note: Data calculated by the CARE system from the date of accident, where data is not available in national files (AT from 1992 onwards, BE, FR prior to 1993, PT, SE).

Data availability: All countries.

PERSON CLASS

DRIVER

Definition: Person driving or riding any motorised vehicle or pedal cycle. Person herding animals is not a driver (except BE, AT). Learner driver is a driver (except ES, PT). Learner driver is a driver during a driving test, but not in a driving lesson (DK). Driving instructor is not a driver (except ES, PT). Driving instructor is a driver during a driving lesson, but not during a driving test (DK).

Note: Uninjured drivers are included in the database (except GB, NI, NL: implicitly included in vehicle records only). Data on driving instructors and learner drivers collected separately from 1993 onwards (SE).

Data availability: All countries.

PASSENGER

Definition: Person on or in a vehicle, who is not the driver. Includes person in the act of boarding or alighting from a vehicle (except DK). Learner driver is not a passenger (except ES, PT). Learner driver is a passenger during a driving lesson, but not during a driving test (DK). Driving instructor is a passenger (except ES, PT). Driving instructor is a passenger during a driving test, but not in a driving lesson (DK).

Note: Uninjured passengers not included in the database (except FR, IE, LU; ES, FI in some cases, AT).

Data availability: All countries.

PEDESTRIAN

Definition: Person on foot. Person pushing or holding bicycle (except DK). Person pushing a pram or pushchair. Person leading or herding an animal (except DK, AT). Person riding a toy cycle on the footway (except AT). Person on roller skates, skateboard or skis (except AT). Does not include person in the act of boarding or alighting from a vehicle (except DK, ES).

Note: Uninjured pedestrians not included in the database (except BE, IE, LU, NL implicitly included in element records; DK, FR, FI, AT, SE if they caused the accident; ES not consistently).

Data availability: All countries.

TYPE OF INJURY

INJURED

Definition: Injured with application of correcting coefficient as stated for the 'Killed at 30 days'. Injured in a road accident. Hospitalisation or medical treatment not necessarily required (except FR). Self declaration of injury (DK if slight; FI, GB, IT, IE, NI). Opinion of the police. Aggregation of the following. injury severities: SERIOUSLY INJURED AS REPORTED + SLIGHTLY INJURED + INJURED - 1 COEFFICIENT

Data availability: All countries

FATALITIES

Definition:

Death within 30 days of a road accident (UN/ECE Geneva 1995 – Statistics of Road Traffic Accidents in Europe and North America, annex 1). Suicide not included (except DK, ES, FR). Natural death not included (except LU, SE). Corrective factors have been applied to comply with this international definition for the following countries: EL (24 hours), ES (24 hours in CARE; 24 hours before 1993 in publication), FR (6 days), IT (7 days), AT (3 days before 1992), PT (24 hours).

Data availability:

All countries.

Member State	Correcting factors		
Greece	K(30) = K * 1.18 up to 1995		
Spain	K(30) = K * 1.3 up to 1992		
	1993 up to 1996:	Outside urban area	Inside urban area
	Driver	K(30)=K+SI*2.46%	K(30)=K+SI*1.02%
	Passenger	K(30)=K+SI*2.29%	K(30)=K+SI*0.94%
	Pedestrian	K(30)=K+SI*7.22%	K(30)=K+SI*3.87%
	1997 up to 2000:	Outside urban area	Inside urban area
	Driver	K(30)=K+SI*2.44%	K(30)=K+SI*1.93%
	Passenger	K(30)=K+SI*2.17%	K(30)=K+SI*1.80%
	Pedestrian	K(30)=K+SI*4.76%	K(30)=K+SI*5.71%
	2001 up to 2004:	Outside urban area	Inside urban area
	Driver	K(30)=K+SI*2.41%	K(30)=K+SI*2.17%
	Passenger	K(30)=K+SI*2.24%	K(30)=K+SI*2.15%
Pedestrian	K(30)=K+SI*6.17%	K(30)=K+SI*4.34%	
France	K(30) = K * 1.09 up to 1993 K(30) = K * 1.057 from 1994 onwards		
Italy	K(30) = K * 1.078		
Austria	K(30) = K * 1.12 only for 1991		
Portugal	K(30) = K * 1.3 up to 1997 K(30) = K * 1.14 from 1998 onwards		
K: number of persons killed, SI: number of persons seriously injured			

GENDER

FEMALE

Definition:

Determined by the police (except ES, IT, LU, AT, PT: on the basis of identity documents; DK, FI, SE: on the basis of personal ID number).

Data availability:

All countries.

MALE

Definition: Determined by the police (except ES, IT, LU, AT, PT: on the basis of identity documents; DK, FI, SE: on the basis of personal ID number).

Data availability: All countries.

AGE

AGE

Definition: Length of life of person. Rounded down to whole number of years (except EL, IT, NI: rounded to nearest year).

Note: Age 0 to 1 is exceptionally rounded up (FR, IT, IE, LU, NI, PT). Age over 99 only available for ES, FR (1993 on), NL.

Data availability: All countries.

AREA TYPE

INSIDE URBAN AREA

Definition: Area inside urban area boundary signs (except IE, UK). Includes dual carriageways and national roads. Can include motorways (except DK, EL, IT). Opinion of the police (DK, SE).

Note: Data approximated from speed limit of 40 mph or less (IE, UK).

Data availability: All countries.

OUTSIDE URBAN AREA

Definition: Area outside urban area boundary signs. Opinion of the police (DK, SE). Includes motorways.

Note: Data approximated from speed limit of over 40 mph (IE, UK).

Data availability: All countries.

MOTORWAY

Definition: Public road with dual carriageways, and at least two lanes each way. Entrance and exit signposted. Road with grade separated interchanges. Road with a central barrier or central reservation. No crossing permitted. No stopping permitted unless in an emergency. Entry prohibited for pedestrians, animals, pedal cycles, mopeds, agricultural vehicles; learner drivers (BE, GB, EL, IE, NI, PT). Access restricted to motor vehicles (DK, FI, AT). Minimum speed between 50 km/h and 80 km/h (except FR, UK). Maximum speed between 100 km/h and 130 km/h (except DK recommended 130 km/h).

Data availability: All countries.

MODES OF TRANSPORT – VEHICLE GROUP

AGRICULTURAL TRACTOR

Definition: Motor vehicle for agricultural use, with wheels or caterpillar tracks, with at least two axles. Driving licence required (DK, EL, ES, FI, GB, IT, IE, LU, AT; not in FR). Maximum speed 30 km/h or 40 km/h.

Data availability: All countries (except DK prior to 1997, AT, FR, GB, IE from 1996 onwards, LU).

Value included in another value:

agricultural machine (FR), construction or agricultural machine (DK, AT prior to 1997), agricultural or industrial tractor (LU), other motor vehicle (GB), other (IE from 1996 onwards).

BUS OR COACH

Definition:

Motor vehicle with at least four wheels, used for transporting people. Public or private use. Type D driving licence required (BE, GB, IE, NI). Includes bus, more than 8 and 16 seats, minibus, trolley-bus (except LU), scheduled bus, unscheduled bus, school bus.

Data availability:

All countries.

CAR OR TAXI

Definition:

Includes car, taxi. Motor vehicle with four wheels. Used to transport only or mainly people. Seating for no more than 8 passengers. Type B driving licence required. Includes taxi-bus (NL).

Data availability:

All countries.

HEAVY GOODS VEHICLE

Definition:

Includes road tractor, road tractor with semi trailer, lorry over 3,5 tonnes. Motor vehicle with at least four wheels, with a permissible gross vehicle weight of over 3.5 tonnes, used only for the transport of goods. With or without a trailer. Type C driving licence required. Includes lorry, over 3.5 tonnes ; road tractor ; road tractor with semi-trailer ; lorry with trailer ; tanker (except FI).

Note:

Lorries cannot systematically be categorised as over 3.5 tonnes (DK, IT).

Data availability:

All countries (except DE, IT).

LORRY, LESS THAN 3,5 TONNES

Definition:

Motor vehicle with a permissible gross vehicle weight of less than 3.5 tonnes, used only for the transport of goods. Type B driving licence required.

Note:

Lorries cannot systematically be categorised as less than 3.5 tonnes (DK, IT).

Data availability:

All countries (except DK, IT, LU).

MOPED

Definition:

Motor vehicle with two wheels, with an engine size of less than 50 cc. Design speed between 25 km/h and 50 km/h. One or two seats. Minimum age for driver between 14 and 18 (except IT). No driving licence required (ES, FR, FI, GB, IT, PT, SE). Unregistered vehicle (BE, DK, ES, FR, SE).

Data availability:

All countries (except IE from 1996 onwards).

Value included in another value:

Two wheeled motor vehicle (IE from 1996 onwards).

MOTORCYCLE

Definition:

Motor vehicle with two or three wheels (not three wheeled in DK), with an engine size of more than 50 cc. With a trailer possible (except DK). With a sidecar possible. Registered vehicle (except PT). Type A driving licence required. Includes motor scooter (except FR).

Data availability:

All countries (except IE from 1996 onwards).

Value included in another value: two wheeled motor vehicle (IE from 1996 onwards).

OTHER VEHICLE

Definition: Includes other non-motor vehicle, other motor vehicle.

PEDAL CYCLE

Definition: Vehicle with at least two wheels, without engine, moved by pedals or hand cranks. With or without a trailer. With or without passengers. Ridden in the carriageway. Ridden on the pavement (except DK, LU).

Data availability: All countries.

PEDESTRIAN

Definition: Wherever a person's person class has been identified as being pedestrian, its vehicle type is "pedestrian". This as opposed to older version of CARE where a pedestrian didn't have a vehicle type.

Data availability: All countries.

JUNCTION TYPE

JUNCTION

Definition: Road intersection with three or more arms. Not grade separated. Includes T junction, Y junction, crossroad, level crossing (except DK, FI, GB, NI), roundabout (except FR), multiple junction.

Data availability: All countries (except EL).

CROSSROAD

Definition: Road intersection with four arms. Opinion of the police (DK, ES, FI; not AT).

Data availability: All countries (except BE, EL).

NOT AT A JUNCTION

Definition: Position on road more than 20m from a junction or roundabout (GB, IE, NI, NL, AT). Position on road more than 50m from a junction (FR). Opinion of the police (BE, DK, ES, FI, IT, LU, SE).

Data availability: All countries (except EL).

ROUNDBOUT

Definition: Circular highway. Includes sections of the road leading into it, within 20m (GB, IE, NI, AT). Opinion of the police (DK, ES, FR, IT).

Data availability: All countries (except BE, DK, EL, FI, LU, PT).

T OR Y JUNCTION

Definition: Road intersection with three arms. Includes T junction, Y junction, staggered junction.

Data availability: All countries (except BE, EL, FI, IT, PT).

6 List of tables

Table 1:	Annual number of injury accidents by country, 2001-2010	11
Table 2:	Annual number of fatalities by country, 2001-2010	14
Table 3:	Annual number of fatal accidents by country, 2001-2010	17
Table 4:	Annual number of pedestrian fatalities by country, 2001-2010	19
Table 5:	Annual number of pedal cyclist fatalities by country (includes all riders and passengers of pedal cycles), 2001-2010	20
Table 6:	Annual number of moped rider & passenger fatalities by country, 2001-2010	21
Table 7:	Annual number of motorcycle rider & passenger fatalities by country, 2001-2010	22
Table 8:	Annual number of car and taxi driver and passengers fatalities by country, 2001-2010	24
Table 9:	Annual number of heavy goods vehicles >3,5t fatalities by country, 2001-2010	25
Table 10:	Annual number of lorries <3,5t fatalities by country, 2001-2010	26
Table 11:	Annual number of buses or coaches fatalities by country, 2001-2010	27
Table 12:	Annual number of fatalities by age group by country, 2001-2002	30
Table 13:	Annual number of fatalities by age group by country, 2003-2004	31
Table 14:	Annual number of fatalities by age group by country, 2005-2006	32
Table 15:	Annual number of fatalities by age group by country, 2007-2008	33
Table 16:	Annual number of fatalities by age group by country, 2009-2010	34
Table 17:	Annual number of female fatalities by country, 2001-2010	35
Table 18:	Annual number of male fatalities by country, 2001-2010	36
Table 19:	Annual number of female fatalities by country, drivers (2001-2010)	38
Table 20:	Annual number of male fatalities by country, drivers (2001-2010)	39
Table 21:	Annual number of female fatalities by country, passengers (2001-2010)	40
Table 22:	Annual number of male fatalities by country, passengers (2001-2010)	41
Table 23:	Annual number of female fatalities by country, pedestrians (2001-2010)	42
Table 24:	Annual number of male fatalities by country, pedestrians (2001-2010)	43
Table 25:	Number of total fatalities by age group by country, 2010	44
Table 26:	Number of female fatalities by age group by country, 2010	45
Table 27:	Number of male fatalities by age group by country, 2010	46
Table 28:	Number of pedestrian fatalities by age group by country, 2010	47
Table 29:	Number of pedal cyclist fatalities by age group by country, 2010	48
Table 30:	Number of moped rider and passenger fatalities by age group by country, 2010	49
Table 31:	Number of motorcycle rider and passenger fatalities by age group by country, 2010	50
Table 32:	Number of car driver and passenger fatalities by age group by country, 2010	51
Table 33:	Number of fatalities by mode of transport (in which the fatality was travelling) and type of area by country (part 1), 2010	53
Table 34:	Number of fatalities by mode of transport (in which the fatality was travelling) and type of area by country (part 2), 2010	54
Table 35:	Number of fatalities by month by country (January to June), 2010	56
Table 36:	Number of fatalities by month by country (July to December), 2010	57
Table 37:	Number of driver fatalities by month by country (January to June), 2010	58
Table 38:	Number of driver fatalities by month by country (June to December), 2009-2010	59
Table 39:	Number of passenger fatalities by month by country (January to June), 2010	60
Table 40:	Number of passenger fatalities by month by country (July to December), 2010	61
Table 41:	Number of pedestrian fatalities by month by country (January to June), 2010	62
Table 41:	Number of pedestrian fatalities by month by country (July to December), 2010	63
Table 43:	Total number of fatalities by day of week by country, 2010	65
Table 44:	Number of fatalities by day of week by country, 2010 (drivers)	66
Table 45:	Number of fatalities by day of week by country 2010 (passengers)	67
Table 46:	Number of fatalities by day of week by country, 2010 (pedestrians)	68
Table 47:	Number of fatalities by hour of day by country (00-08), 2010	69
Table 48:	Number of fatalities by hour of day by country (09-16), 2010	70
Table 49:	Number of fatalities by hour of day by country (17-24), 2010	71
Table 50:	Number of fatalities by type of area and road by country, 2010	75
Table 51:	Number of fatalities by type of junction by country, 2009*	76
Table 52:	Number of fatalities by weather conditions by country, 2010	78

7 List of figures

Figure 1:	Annual number of fatalities, injury accidents and injured people (EU-27), 2001-2010	7
Figure 2:	Fatalities per million inhabitants, 2010 compared to 2001 (EU-27)	7
Figure 3:	Share of fatalities by area type in EU-21, 2010	8
Figure 4:	Distribution of male and female fatalities by person class in EU-24, 2010	8
Figure 5:	Distribution of fatalities by mode of transport, 2010	9
Figure 6:	Percentage change in number of fatalities and injury accidents by country (2010 compared to 2001)	10
Figure 7:	Annual number of injury accidents by country (BE – ES), 2001-2010	12
Figure 8:	Annual number of injury accidents by country (FR-PL), 2001-2010	12
Figure 9:	Annual number of injury accidents by country (PT-UK), 2001-2010	13
Figure 10:	Annual number of fatalities by country (BE-ES), 2001-2010	15
Figure 11:	Annual number of fatalities by country (FR-PL), 2001-2010	15
Figure 12:	Annual number of fatalities by country (PT-UK), 2001-2010	16
Figure 13:	Percentage change in number of fatalities by mode of transport in EU-18 (2010 compared to 2001)	18
Figure 14:	Annual number of fatalities by mode of transport (in which the fatality was travelling, includes driver & passenger), 2001-2010	23
Figure 15:	Annual number of fatalities by mode of transport (in which the fatality was travelling, includes driver & passenger), 2001-2010	28
Figure 16:	Increase / decrease of number of fatalities by gender (EU-19), 2010 compared to 2001	29
Figure 17:	Annual distribution of fatalities by gender, EU-19 (2001 and 2010)	37
Figure 18:	Fatalities by type of area and mode of transport (EU-23), 2010	52
Figure 19:	Number of fatalities by month (EU-22), 2010	55
Figure 20:	Number of fatalities by month and person class (EU-22), 2010	55
Figure 21:	Total number of fatalities by day of week and person class (EU-23), 2010	64
Figure 22:	Number of fatalities by hour of day (EU-21), 2001 and 2010	72
Figure 23:	Distribution of fatalities by hour of day and person class (EU-21), 2010	72
Figure 24:	Distribution of fatalities by hour of day and mode of transport (EU-21), 2010	73
Figure 25:	Number of fatalities by type of area by country, 2010	74
Figure 26:	Number of fatalities by weather conditions (EU-23), 2010	77